

Box No. 1

Hma Ref No. PBLAC/1943-46/1

Catalogue Date 09/09/2008

Catalogued By JH

Location Geven House

Material Type Pressbook

Description bound volume of press cuttings - first date of press cuttings - 7th october 1943 - last date of press cuttings 25th january 1946, nottingham

Box No.

Hma Ref No. EPHLAC/1943-1945/2

Catalogue Date 09/09/2008

Catalogued By JH

Location Geven House

Material Type Ephemera

Description velvet covered comments book with signatures including queen elizabeth

Size

Condition

Size

Condition



Comments



Comments

Box No. 1
Hma Ref No. PROGLAC/1943/3-7
Catalogue Date 09/09/2008
Catalogued By JH
Location Geven House
Material Type Programme
Description 4 copies of the programme for the exhibition. wording is in spanish and in english. there plans to take the exhibition to latin-american countries

Size
Condition



Comments

Box No.
Hma Ref No. OLAC/1943/8
Catalogue Date 09/09/2008
Catalogued By JH
Location Geven House
Material Type Object
Description panel with 'crest' lion and 3 stars , roses printed/hand painted. paper, mounted on wood frame.

Size
Condition



Comments

Box No. 1

Hma Ref No. CLAC/1988/9

Catalogue Date 09/09/2008

Catalogued By JH

Location Geven House

Material Type Correspondence

Description letter from a barbara manley to hartnell (manny silverman adds a note to george mitchison) asking about the whereabouts of the dolls from the latin american exhibition of costume

Box No.

Hma Ref No. CLAC/1988/10

Catalogue Date 09/09/2008

Catalogued By JH

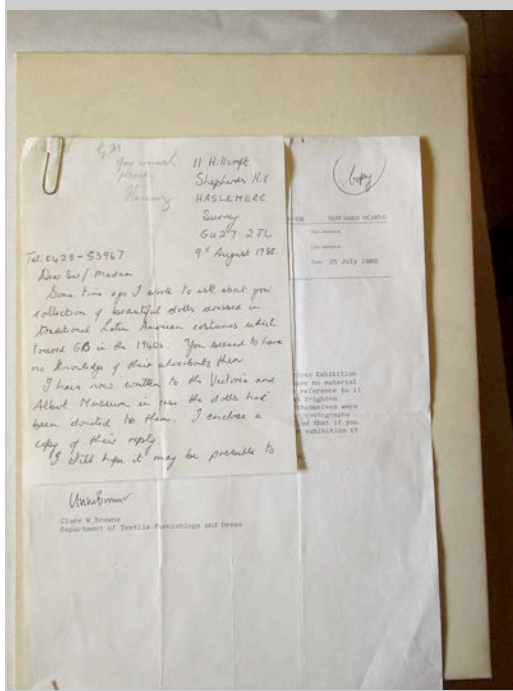
Location Geven House

Material Type Correspondence

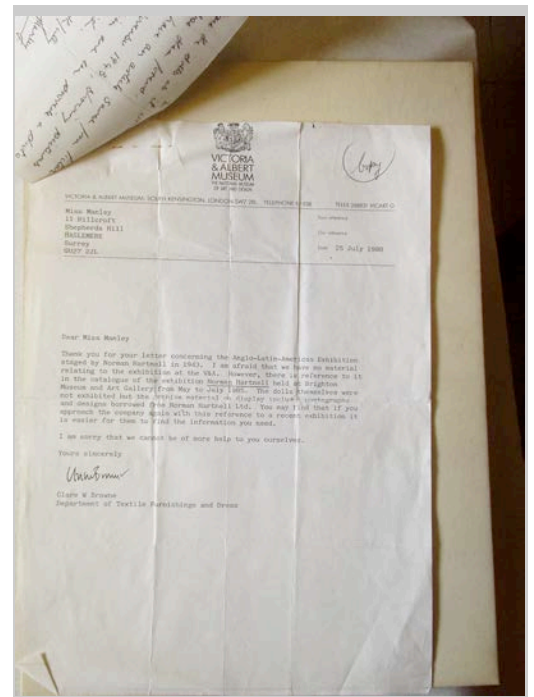
Description letter from v&a (clare w brown, dept of textiles, furnishings and dress) explaining that the v&a do not have any materials from the exhibition

Size
Condition

Size
Condition



Comments



Comments

Box No. 1
Hma Ref No. OLAC/1942/11
Catalogue Date 09/09/2008
Catalogued By JH
Location Geven House
Material Type Object
Description figure of st george, patron saint of england. designed and decorated by henry firmer 1942

Box No.
Hma Ref No. PLAC/1943/12
Catalogue Date 09/09/2008
Catalogued By JH
Location Geven House
Material Type Photograph
Description brown envelope containing latin american costume exhibition photographs

Size
Condition

Size
Condition



Comments

Comments

Box No. 1

Hma Ref No. SLAC/1943/13

Catalogue Date 09/09/2008

Catalogued By JH

Location Geven House

Material Type Sketch

Description pencil sketch with white painted detail for 'mexico' – detail of plaited hair.hartnell has written on the sketch - "this is too big" - "this size" - "make the plait narrow – otherwise it will hide the bodice of the dress"

Box No.

Hma Ref No. OLAC/1943/14

Catalogue Date 09/09/2008

Catalogued By JH

Location Geven House

Material Type Object

Description "original design by norman hartnell". anglo – latin-american exhibition of costume. framed.signed. signed painting of st george, patron saint of england & st rose of lima, patron saint of the americas'. used as cover for the accompanying catalogue for the exhibition.

Size 35cmx25cm

Condition quite marked

Size 54 ½cmx39cm

Condition quite good – cleanish



Comments



Comments

Box No. 1

Hma Ref No. SLAC/1943/15

Catalogue Date 09/09/2008

Catalogued By JH

Location Geven House

Material Type Sketch

Description watercolour sketched design for "the lure of latin america". framed in card mount. signed in pencil by hartnell. figure holds a smouldering cigar in left hand. not attributed to any one latin american country. reverse of sketch – pencil sketch of a boot on a foot. notes read "in any colour".

Size 35cmx26 3/4cm, mount 50cm x37cm

Condition card mount is tatty & marked – torn at edges. sketch quite dirty and marked.



Comments

Box No.

Hma Ref No. SLAC/1943/16

Catalogue Date 12/08/2008

Catalogued By JH

Location Landing, Geven House

Material Type Sketch

Description not labelled as a sketch from this exhibition, label on back reads : wright hepburn gallery , 10 haskin arcade, motcomb st, london, sw1. belgravia 3486. dealers in theatre designs. signed by norman hartnell. numbers printed on back – 175 15 60, large h in red crayon. framed watercolour design, bridal gown in green with blue stars, empire line, ? at neckline. figure stands in front of an altar with picture of a saint/virgin mary surrounded by jewells, necklaces, pearls etc. two candles burn either side of altar. she holds a book open in front of her and has her eyes closed.

Size 25cmx34cm, mount 52cm x41 cm

Condition good



Comments

Box No. 1

Hma Ref No. SLAC/1943/17

Catalogue Date 12/08/2008

Catalogued By JH

Location Landing, Geven House

Material Type Sketch

Description original watercolour design for 'argentine' costume. signed by norman hartnell. browny red and orange ensemble with black lace and ribbon. frame din gold frame with card mount, red ? ? sketch on mount. numbers on back f7 75 2

Box No.

Hma Ref No. SLAC/1943/18

Catalogue Date 12/08/2008

Catalogued By JH

Location Landing, Geven House

Material Type Sketch

Description original watercolour design for 'bolivia' costume. signed by norman hartnell. rbgith yellow skirt and red and black decoration. red bodice and green, yellow, black decoration. figure holds a riding whip and cigar, wears a small black hat and a rose behind her ear. black riding boots with red heels and spurs. one foot upon a saddle, one riding glove on, the other glove is on the ground. as with his fashion sketches & sketches for the royal ?, hartnell frames his figures in this series within a painted 'frame', the figure breaking this 'frame' to give the effect of making the figure more 3- dimensional. numbers on back 16 75 f4

Size 24cmx34cm, frame 52cmx41cm

Condition

Size 24cmx34cm, mount 52cm x41 cm

Condition good



Comments



Comments

Box No. 1

Hma Ref No. SLAC/1943/19

Catalogue Date 12/08/2008

Catalogued By JH

Location Landing, Geven House

Material Type Sketch

Description original watercolour design for "brazil" costume, signed by norman hartnell. gold frame, card mount. figure wears pink dress, square-necked bodice with large puffed sleeves, white overskirt decorated with pink & blue flowers & shell-like motifs, small black hat with high crown decorated with pink & blue feather. figure carries white fan & small (prayer?) book. blue painted border, pink flesh tones, bright red heart-shaped lips, black ringlets. numbers on reverse: 12, 175, 64, red h

Size 24cm x 34cm, frame 41cm x 52 cm

Condition very good



Comments

Box No.

Hma Ref No. SLAC/1943/20

Catalogue Date 12/08/08

Catalogued By JH

Location Landing, Geven House

Material Type Sketch

Description original watercolour for "chile" costume, signed by norman hartnell. gold frame, card mount. figure in green skirt decorated with red & gold floral design, orange shawl, red shoes & carries fan. grey painted frame/border (steps through frame). numbers written on reverse: 17, 175, 57, h red

Size 24cm x 34cm, frame 41cm x 52cm

Condition sketch a little dirty, "chile" has been erased & written again



Comments

Box No. 1

Hma Ref No. SLAC/1943/21

Catalogue Date 12/08/08

Catalogued By JH

Location Landing, Geven House

Material Type Sketch

Description framed watercolour design for colombia costume. signed by norman hartnell. figure dressed all in black with slim fitting full length gown and black shawl edged with black lace (wrapped over head and body). grey painted frame. pair of doves and bird bath. numbers on back: 65 8 54.

Size 24cm x 34cm, frame 41cm x 52cm

Condition sketch quite yellowed - large brown mark to left hand corner (bottom) over corner of sketch & card



Comments

Box No.

Hma Ref No. SLAC/1943/22

Catalogue Date 13/08/08

Catalogued By JH

Location Landing, Geven House

Material Type Sketch

Description framed watercolour design for charming chile costume. signed by norman hartnell. figure wears short but very full skirted ensemble in red/brown and blue with gold lace trim, red/brown bodice, blue bows, elaborate plaited hair, gold shawl. dark blue painted frame. numbers on back f9 6 15.

Size 24cm x 34cm, frame 41cm x 52cm

Condition damp mark to card mount bottom left hand corner. chile had been rubbed out and 'charming chile'



Comments

Box No. 1

Hma Ref No. SLAC/1943/23

Catalogue Date 13/08/08

Catalogued By JH

Location Landing, Geven House

Material Type Sketch

Description framed watercolour design for cuba, pearl of the antilles costume. signed by norman hartnell. figure wears full length slim fitting gown with tiered effect at skirt, heavy lace veil and cape painted in blobs of white paint. 'tobacco flowers'.

Size 24cm x 34cm, frame 41cm x 52cm

Condition very good - clean



Comments

Box No.

Hma Ref No. SLAC/1943/24

Catalogue Date 13/08/08

Catalogued By JH

Location Landing, Geven House

Material Type Sketch

Description framed watercolour design for dominica. signed by norman hartnell. figure dressed in yellow and black costume. 'the only dress in the exhibition which betrays the spanish influence'. she carries an orange in her hand. each tier of the dress (x 3) has different colour rose, shawl in black with yellow fringe and flower decoration. 3 roses behind left ear. yellow rectangle frame. numbers on back: 175 7 h

Size 24cm x 34cm, frame 41cm x 52cm

Condition good - small copper spot centre bottom



Comments

Box No. 1

Hma Ref No. SLAC/1943/25

Catalogue Date 13/08/08

Catalogued By JH

Location Landing, Geven House

Material Type Sketch

Description framed watercolour design for guatemala. signed by norman hartnell. figure wears slim fitting full length skirt in horizontal stripes with long fringe edging. wrap around orange waist band and 'poncho' style bodice decorated with horizontal design (spots, zig zags etc). she has a basket of fruit on her hip and at feet, large hoop earrings and pompom decoration in blue and orange. green painted frame. numbers on back: 175 f8 h

Box No.

Hma Ref No. SLAC/1943/26

Catalogue Date 13/08/08

Catalogued By JH

Location Landing, Geven House

Material Type Sketch

Description framed watercolour design for haiti. signed by norman hartnell. figure, sketched in a very comedic and gawky position - not elegantly posed like the other (white) figures, exaggerated bangles - yellow ostrich feathers sticking up from large orange bow at hip. black bodice laced over white overshirt tied up to reveal red underskirt . red and white polka dot blouse , 3 red hearts, yellow shawl at centre front. orange painted frame. no shoes. numbers at back: 4 175 61 h (red)

Size 24cm x 34cm, frame 41cm x 52cm

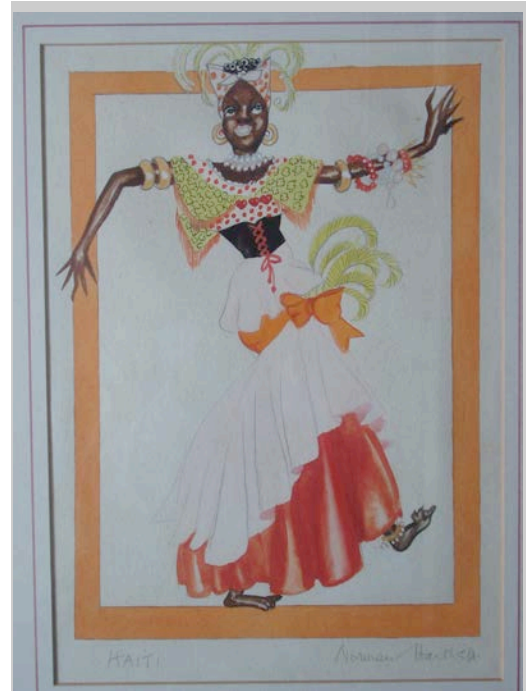
Condition good

Size 24cm x 34cm, frame 41cm x 52cm

Condition good. small copper spot next to hand, further copper spotting



Comments taken from a colour photograph taken in the quiche highlands in 1936



Comments 'native dress in typically vivid colours from description by madame bella pons'.

Box No. 1

Hma Ref No. SLAC/1943/27

Catalogue Date 14/08/08

Catalogued By JH

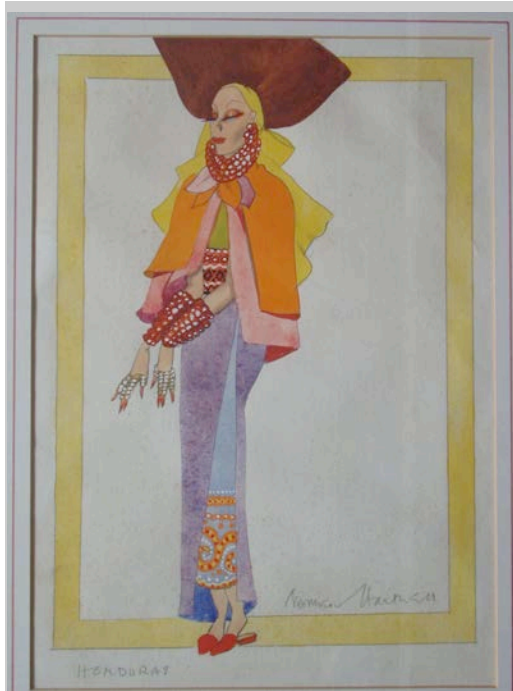
Location Landing, Geven House

Material Type Sketch

Description framed watercolour design for honduras. signed by norman hartnell. figure wears slim line blue skirt and wraparound blue overskirt, crepe cape, large yellow headscarf and brown hair, long bangles and hand ornaments. red slip on shoes. yellow painted frame. numbers on back: 3 175 55 h (red).

Size 24cm x 34cm, frame 41cm x 52cm

Condition quite dirty and spotted all over



Comments photo of original sketch for this shows black figure - 'copied from watercolour painting', 'dusky inhabitant'

Box No.

Hma Ref No. SLAC/1943/28

Catalogue Date 14/08/08

Catalogued By JH

Location Landing, Geven House

Material Type Sketch

Description framed watercolour design for micaragua. signed by norman hartnell. figure wears lace petticoat and bodice and floral full length skirt (flowers in white). mauve cape edged with pink decorated in floral/star design. rosary in right hand. two dark, looped plaits and floral/star head dress. mauve painted frame. numbers on back: 59 19 h (red)

Size 24cm x 34cm, frame 41cm x 52cm

Condition good. no spotting.



Comments

Box No.	1
Hma Ref No.	SLAC/1943/29
Catalogue Date	14/08/08
Catalogued By	JH
Location	Landing, Geven House
Material Type	Sketch
Description	framed watercolour design for panama. signed by norman hartnell. figure wears full length white dress, off the shoulder, lace hem and ruffles at bodice. green sash, flowers in hair, pink ribbon around crown, 3 fish at feet. green painted frame. numbers on back: 11 f10 115 h (red).

Size	24cm x 34cm, frame 41cm x 52cm
Condition	good. small smudge below hat ribbon



Comments "pollera" native dress, revived by lady mallet, widow of sir claud mallet. dress is embroidered with pineapples in mauve and relieved by emerald green

Box No.	
Hma Ref No.	SLAC/1943/30
Catalogue Date	14/08/08
Catalogued By	JH
Location	Landing, Geven House
Material Type	Sketch
Description	framed watercolour design for paraguay. signed by norman hartnell. figure wears full length white lace dress, orange and black decoration at neckline and skirt. rows of pearls at neck, bangles, long black plait, large orange rose at right ear, brown pot under right arm, bare feet. nail varnish at hands and feet as in all his theatre sketches. orange painted frame. numbers on back: 175 18 58 h (red).

Size	24cm x 34cm, frame 41cm x 52cm
Condition	clean. little sirty at edge down left side. few spots.



Comments 'authentic national dress composed of the famous local nanduri lace. sloping neckline exposing one shoulder is indigenous to the costume.'

Box No. 1

Hma Ref No. SLAC/1943/31

Catalogue Date 14/08/08

Catalogued By JH

Location Landing, Geven House

Material Type Sketch

Description framed watercolour design for lima peru. signed by norman hartnell. figure wears full length full skirted blue dress and pink shawl (long) edged with white tassels. carries a black lace fan with blue 'eyes' in the lace and covers head with black headscarf (similar to hijab), pink rose at feet. pale blue painted frame. numbers on back:

Box No.

Hma Ref No. SLAC/1943/32

Catalogue Date 14/08/08

Catalogued By JH

Location Landing, Geven House

Material Type Sketch

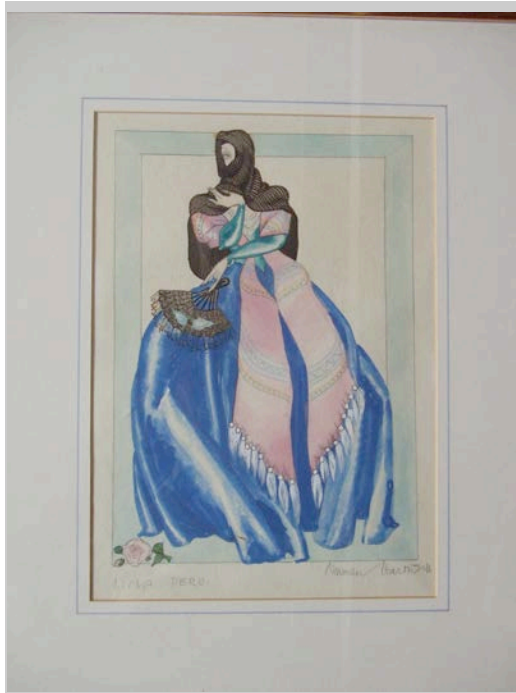
Description framed watercolour design for salvador. signed by norman hartnell. figure wears full length slim fitting skirt (white, blue, red, orange pattern), blue bodice and bolero (described as 'swathed scarf') with wide shoulders and fringed decoration. large hoop earrings, bandana/bow at head. pale blue painted frame. numbers on back: 175 20 62 h.

Size 24cm x 34cm, frame 41cm x 52cm

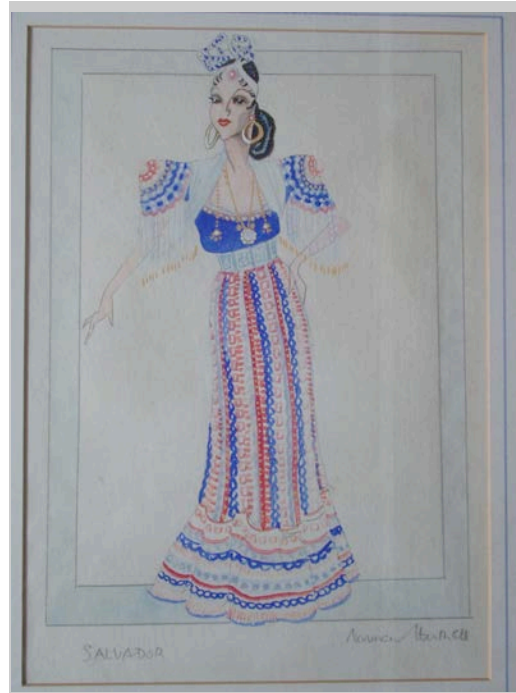
Condition copper bleeding around crown of head, otherwise clean. damage centre bottom of blue skirt.

Size 24cm x 34cm, frame 41cm x 52cm

Condition fairly clean, few spots on sketch around signature - longer spot to right of figure below extended hand



Comments 'the veiled lady of lima, which style of morrish origin prompted a papal (?) 1671. despite its ecclesiastical bar, the peruvian women persist in wearing this



Comments 'a typical salvador dress. the scarf that swathes the neckline is an important feature. the basis of this costume is an actual piece of patterned silk

Box No.	1
Hma Ref No.	SLAC/1943/33
Catalogue Date	14/08/08
Catalogued By	JH
Location	Landing, Geven House
Material Type	Sketch
Description	framed watercolour design for uruguay. signed by norman hartnell. figure wears a crinoline in white, striped with ochre, brown and pink, opening at centre front to reveal yellow ochre ruffled underskirt decorated with floral design in pink, mauve and green. pink bow at waist, brown sleeves, white shawl bodice button through decorated with same pink/mauve/green floral design. white bonnet with pink bow and brown feather. long fur stole and muff.

Size	24cm x 34cm, frame 41cm x 52cm
Condition	clean but mount a slightly spotted



Comments 'this demure costume of mid-nineteenth century taken from a picture prided by lady effie millington-drake suggests the national characteristics of the

Box No.	
Hma Ref No.	SLAC/1943/34
Catalogue Date	14/08/08
Catalogued By	JH
Location	Landing, Geven House
Material Type	Sketch
Description	framed watercolour design for venezuela. signed by norman hartnell. figure dressed in full length full skirt in yellow, blue and red decorated with stars (circle of 7). white apron edged with lace, pale blue polka dot blouse and white lace collar, red cuffs. red bead necklace and cross. yellow hair decorated with white dove and laurel. red nails. pale blue painted frame. numbers on back: 1 175 f1 h.

Size	24cm x 34cm, frame 41cm x 52cm
Condition	good. clean - spotting to blue frame



Comments 'composite costume from the flag of venezuela and peasant attire. the figure displays a ?, glorifying simon bolivar, the liberator of five latin american