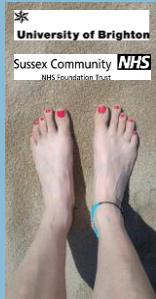


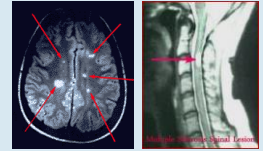
The Lived-Experience of impaired sensation in the feet related to Multiple Sclerosis

A Descriptive Phenomenological Study

Claire Cook – MRes Clinical Research Student
Dr Pirjo Vuoskoski – Research Supervisor



Context of the Research



MS Pictures from Bart's MS Blog
<http://multiple-sclerosis-research.blogspot.com/>

Impaired sensation in the feet related to MS

- 60% altered sensation (MS Society 2017)
- 55% sensory loss
- 58% pins and needles
- Altered gait pattern (Thoumie and Mevellec: 2002)
- Reduced balance (Citaker et al.2011; Cattaneo&Jonasdotir 2009)
- Increased risk of falls (Nilisagård et al 2009)
- Reflexology (Siev-Ner et al. 2003)
- Exercises + sensory strategies (Cattaneo et al. 2007; Gandolfi et al 2015)
- Textured insoles (Dixon et al 2014; Kalron et al 2015)

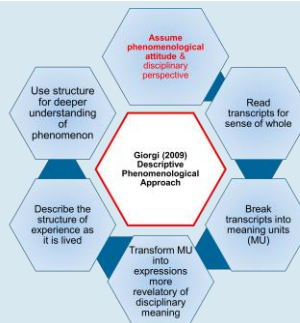
Impaired sensation in clinical practice

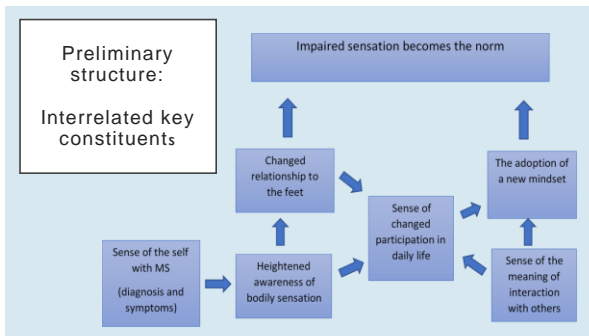
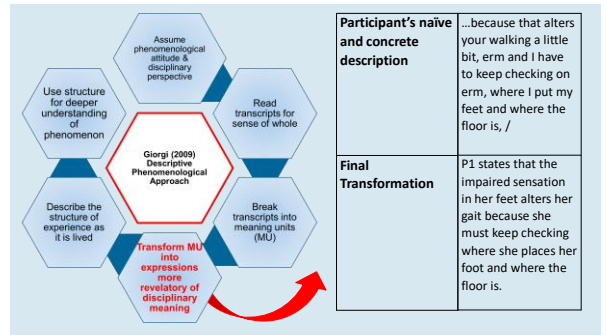
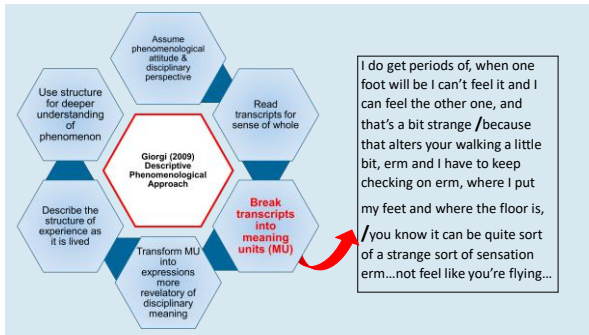


Research Question & Methodology

What are the Lived Experiences of impaired sensation in the feet related to MS?

Descriptive Phenomenology





- ### Implications
- Personal implications
 - Findings add knowledge to the phenomenological evidence base
 - Increased awareness of the symptom
 - Improved therapeutic encounters
 - More research!



REFERENCES

- Cattaneo, D., J. Jonsdottir, M. Zocchi and A. Regola. 2007. Effects of balance exercises on people with multiple sclerosis: a pilot study. *Clinical Rehabilitation* 21:771-781
- Cattaneo D and J. Jonsdottir. 2009. Sensory impairments in quiet standing in subjects with multiple sclerosis. *Multiple Sclerosis* 15: 59-67.
- Ciziker, S. A. G., Gunduz, M. B., Guclu, B., Nazli, C., Incec, and D. Kaya. 2011. Relationship between foot sensation and standing balance in patients with multiple sclerosis. *Gait & Posture* 34 (2): 275-278.
- Dixon, J., A. L. Hutton, J. Robinson, H. Gamesby-Jay, D. Hodgson, K. Rome, et al. 2014. Effect of textured insoles on balance and gait in people with multiple sclerosis: an exploratory trial. *Physiotherapy* 100: 142-149
- Gandolfi, M., D. Munari, C. Geronzi, A. Gajofatto, M. D. Benedetto, A. Midiri, F. Carlu, A. Picelli, A. Waldner and N. Sirania. 2015. Sensory integration balance training in patients with multiple sclerosis: A randomized, controlled trial. *Multiple Sclerosis* 21 (11): 1453
- Giorgi, A. 2009. *The Descriptive Phenomenological Approach in Psychology: A Modified Husserlian Approach*. Pittsburgh: Duquesne University Press
- Kalron, A., D. Paizelsky, M. Greenburg, Abrahami and A. Achiron. 2015. Do Textured Insoles Affect Postural Control and Spatiotemporal Parameters of Gait and Plantar Sensation in People With Multiple Sclerosis? *PM R* 7: 17-25
- MS Society. 2017. *The invisible symptoms of MS*. Research Matters Winter 012:4-5
- Nilsgard, Y., C. Lundholm, E. Denison and L-G. Gunnarsson. 2009. Predicting accidental falls in people with multiple sclerosis – a longitudinal study. *Clinical Rehabilitation* 23: 259-269
- Siev-Ner, I., Gamus, D., Lerner-Gava, L. and Achiron, A. (2003) Reflexology treatment relieves the symptoms of multiple sclerosis: a randomized controlled study. *Multiple Sclerosis* 9:356-361
- Thounis, P., and E. Mevellec. 2002. Relation between walking speed and muscle strength is affected by somatosensory loss in multiple sclerosis. *Journal of neurology, neurosurgery, and psychiatry* 73 (3): 313-315