

## **Metabolic enzymes of helminth parasites: potential as drug targets**

**David J. Timson<sup>1,2\*</sup>**

**School of Biological Sciences<sup>1</sup> and Institute for Global Food Security<sup>2</sup>, Queen's University Belfast,  
97 Lisburn Road, Belfast, BT9 7BL. UK.**

\* Corresponding Author

Telephone: +44(0)28 90975875

Fax: +44(0)28 90975877

Email: [d.timson@qub.ac.uk](mailto:d.timson@qub.ac.uk)

## **Abstract**

Metabolic pathways which extract energy from carbon compounds are essential for an organism's survival. Therefore, inhibition of enzymes in these pathways represents a potential therapeutic strategy to combat parasitic infections. However, the high degree of similarity between host and parasite enzymes makes this strategy potentially difficult. Nevertheless, several existing drugs to treat infections by parasitic helminths (worms) target metabolic enzymes. These include the trivalent antimonials which target phosphofructokinase and Clorsulon which targets phosphoglycerate mutase and phosphoglycerate kinase. Glycolytic enzymes from a variety of helminths have been characterised biochemically, and some inhibitors identified. To date none of these inhibitors have been developed into therapies. Many of these enzymes are externalised from the parasite and so are also of interest in the development of potential vaccines. Less work has been done on tricarboxylic acid cycle enzymes and oxidative phosphorylation complexes. Again, while some inhibitors have been identified none have been developed into drug-like molecules. Barriers to the development of novel drugs targeting metabolic enzymes include the lack of experimentally determined structures of helminth enzymes, lack of direct proof that the enzymes are vital in the parasites and lack of cell culture systems for many helminth species. Nevertheless, the success of Clorsulon (which discriminates between highly similar host and parasite enzymes) should inspire us to consider making serious efforts to discover novel anthelmintics which target metabolic enzymes.

**Keywords:** Glycolysis, neglected tropical disease, Clorsulon, trematode, nematode, cestode

## **Introduction: the need for new drugs to combat helminth infections**

Infections with helminth (worm) parasites are a major burden on humanity. It is estimated that approximately one third of the human population are currently infected with parasitic helminths [1]. The majority of these individuals live in developing countries and the infections are classed as neglected tropical diseases. Many of these individuals are infected with several helminths or with other infectious agents such as HIV, the malarial parasite or bacteria [2]. In many cases, the helminth infections are not immediately life-threatening. However, in general, they result in significant ill health and may have longer term consequences even if the actual infection is cleared. The consequences are not just felt by the infected individuals: reduced productivity of those infected can have drastic consequences for families and communities. This is, perhaps, especially severe in largely agricultural communities which rely heavily on human labour. There is also a world-wide burden on farm animals. Again, this reduces productivity and, consequently, income. Almost twenty years ago, the costs of helminth infections to agriculture in Australia was estimated at one billion US dollars [3]. The current, global cost is likely to be many times that amount.

The main groups of helminth parasites of importance to mammals are from the phyla Platyhelminthes (flat worms) and Nematoda (round worms). Within the Platyhelminthes the trematoda (flukes) and cestoda (tapeworms) are the most important classes and within Nematoda soil transmitted and filarial nematodes are the most important groups. By numbers of humans infected, the roundworm *Ascaris lumbricoides* is the most significant with an estimated 807 million people infected [1]. Whipworms (*Trichuris trichiura*) and hookworms (*Necator americanus* and *Ancylostoma duodenale*) each infect in excess of 500 million people [1]. Among the trematodes, the blood flukes (*Schistosoma spp.*) infect over 200 million people and are second only to the malarial parasites in terms of number of humans killed globally each year [1, 4, 5]. Many of these parasitic infections are zoonotic, being passed to humans from domestic animals [6].

To date, there are no effective vaccines for helminth infections and treatment relies entirely on chemotherapy. While many anthelmintic drugs (e.g. triclabendazole, praziquantel) are cheap, effective and generally considered safe, not all diseases can be treated effectively. Resistance to these drugs is also emerging. Resistance to the triclabendazole (the treatment of choice for *Fasciola spp* infections) has been documented in many countries in farm animals [7-14]. Recently the first confirmed case of a human infected with triclabendazole resistant *F. hepatica* has been reported [15]. Although resistance to praziquantel (used to treat *Schistosoma spp* infections) has not been conclusively demonstrated in the field, it has been shown to occur under laboratory conditions [16, 17]. Ivermectin (a broad spectrum anthelmintic) resistance has also been documented [18-22]. There is even resistance to drugs which have been relatively recently introduced. Monepantel is a broad spectrum drug for the treatment of nematode infections in livestock. It was introduced in 2009 and resistant isolates have already been reported [23]. The emergence of resistance to these drugs is not surprising and its further spread should be expected. Although it may be slowed by improved dosing and prescribing policies, it will not be stopped. Resistance is an almost inevitable evolutionary response by the organism once it is placed under severe selective pressure by the widespread use of anthelmintic drugs. While longer term solutions may come from the use of vaccines or improved living conditions in the developing world, the immediate need is for new drugs [24].

### **The potentials and pitfalls of targeting metabolic enzymes**

Central carbon metabolism (glycolysis, Krebs' tricarboxylic acid cycle, the electron transport chain and associated pathways) is necessary for energy production in the majority of eukaryotes. Inhibition of these processes generally results in reduced ATP production and can lead to cell death. A number of common poisons target elements of carbon metabolism. For example, cyanide ions inhibit cytochrome **coxidase** and arsenate ions can substitute for phosphate ions reducing the ATP

yield from glycolysis and the tricarboxylic (citric) acid cycle (TCA) [25, 26]. These toxins have broad species specificity and affect the majority of organisms tested. Consequently, they have no potential in the treatment of pathogens such as helminth parasites. Nevertheless, the effectiveness of these toxins suggests that inhibition of enzymes in these metabolic pathways is likely to result in death of the parasite.

Further evidence for the critical importance of carbon metabolism comes from inherited metabolic diseases resulting from mutations in the genes encoding enzymes from these pathways. These diseases tend to be rare, but the symptoms are often severe. Examples include triose phosphate isomerase deficiency (OMIM #615512), phosphoglycerate kinase 1 deficiency (OMIM # 300653), hereditary fructose intolerance (aldolase B deficiency; OMIM #22960) and classic galactosemia (galactose 1-phosphate uridylyltransferase deficiency; OMIM #230400) [27-31]. In addition to reduced energy production, these diseases often have additional phenotypes. For example, triosephosphate isomerase deficiency results in a build-up of dihydroxyacetone phosphate which is believed to be toxic, a result which is recapitulated by inhibitors of the enzyme [27, 32]. Therefore, it is expected that inhibition of key metabolic enzymes in helminth pathogens would lead to numerous deleterious pharmacological effects which would kill (or severely harm) the organism.

The pathways of carbon metabolism are highly conserved through evolution, as are the enzymes which catalyse the individual steps. Thus, there are few structural differences between the host and parasite enzymes which can be exploited for the design of species-specific inhibitors. For example, the crystal structures of human and *S. mansoni* hexokinase I have a root mean squared deviation of approximately 1 Å [33]. Nevertheless, there was considerable interest in the 1950s, 1960s and 1970s in studying the metabolic pathways and enzymes of parasites. This interest was, in part, motivated by a desire to discover biochemical or structural differences between host and parasite enzymes which could be exploited in drug discovery. Over the subsequent two to three decades interests waned and only in the last 10 or so years has this interest in helminth metabolic enzymes

recovered. The loss of interest coincided with the widespread use of highly effective anthelmintics such as praziquantel and triclabendazole. The re-emergence of interest coincided with the realisation that resistance to these compounds is a growing threat and to increased interest in targeting metabolism in other pathogens and in cancer [34-39].

Prior to the discovery of praziquantel, the main treatment for schistosome infections was antimony-based compounds. These treatments were somewhat unsatisfactory since they cause considerable side-effects in the patient [40]. These trivalent organic antimonials (e.g. Stibophen, Scheme 1) target the glycolytic enzyme phosphofructokinase (PFK, EC 2.7.1.11) [41, 42]. A similar mechanism, combined with inhibition of a second enzyme, aldolase occurs in filarial worms [43]. The use of these compounds in schistosomiasis has been largely superseded by praziquantel. They are still used to treat leishmaniasis. However, the mode of action in *Leishmania spp* is believed to involve disruption of nucleotide metabolism rather than effects on glycolysis [44, 45].

Clorsulon (MK-401, 4-amino-6-trichloroethenyl 1,3-benzenedisulfonamide; Scheme 1) is used to treat farm animals infected with *Fasciola spp* [46, 47]. Its mode of action is the selective, competitive inhibition of the glycolytic enzymes phosphoglycerate kinase (EC 2.7.2.3) and phosphoglyceromutase (EC 5.4.2.11) [48-51]. It also has weak activity against carbonic anhydrase (EC 2.4.1.1) in the host and, most likely, the parasite [52, 53]. The drug causes widespread damage to the ultrastructure of *F. hepatica* [54-57].

The broad spectrum benzimidazole anthelmintic mebendazole (Scheme 1) has been shown to inhibit the TCA enzyme malate dehydrogenase (EC 1.1.1.37) from *Ascaris suum*, *Fasciola hepatica* and *Moniezia expansa* [58]. Two related compounds, fenbendazole and thiabendazole (Scheme 1) inhibit the malate dehydrogenase of *Trichuris globulosa*. In addition, these compounds also inhibit glucose 6-phosphate dehydrogenase (EC 1.1.1.49) and triacylglycerol lipase (EC 3.1.1.3) from this species [59]. The main target of benzimidazoles is generally considered to be the cytoskeletal protein  $\beta$ -tubulin [60]. It remains to be discovered how significant the inhibition of metabolic

enzymes is in their overall mode of action. Nevertheless, the existence of these examples of proven anthelmintics which target metabolic enzymes suggests that there is considerable scope for further advances in this area.

Although the main pathways of carbon metabolism, and the enzymes which catalyse the individual steps, show high similarity between the parasites and hosts, there are some metabolic adaptations which are unique to the parasites. Most likely, these reflect the life cycles of the worms. In general, these life cycles involve an intermediate, invertebrate host (often a snail or other mollusc) as well as the definitive, mammalian host. In addition, there may be free-living stages. This means that the parasite must adjust to a range of temperatures and oxygen levels [61]. Thus, we would expect that helminth parasite enzymes should be able to be active over wider temperature ranges than the host's (or that helminths would be able to express different isoenzymes which are adapted to particular temperature conditions). Unlike the hosts, the parasite must be able to survive for extended periods under anaerobic conditions. Most eukaryotic species rely largely on glycolytic ATP production under low oxygen conditions. In mammals, this can only be sustained for short periods of time since the energy yield is too low and lactate levels increase, altering the pH of the blood [62].

Many helminth parasites have adaptations to their metabolic pathways which permit increased ATP production under anaerobic conditions. The TCA is modified so that part of it can run partly "in reverse" (Figure 1) [63]. In *F. hepatica*, phosphoenolpyruvate is carboxylated and reduced, converting it to malate. This conversion occurs in the cytoplasm and the malate is transported to the mitochondrial matrix. Similar reactions occur in most aerobic organisms to replenish TCA intermediates when the cycle is used for biosynthesis rather than energy production. In the fluke, there are two fates of the mitochondrial malate [64]. Some molecules are oxidatively decarboxylated to pyruvate, which is subsequently converted to acetyl coenzyme A [65, 66]. This process produces two molecules of NADH. The acetyl coenzyme A then reacts with succinate releasing acetate and generating succinyl coenzyme A. Conversion of this succinyl coenzyme A to

succinate is coupled to the direct production of ATP (Figure 1) [67-69]. The remaining malate molecules are reduced to succinate (via fumarate) in a reversal of the TCA reactions. The production of succinate is catalysed by fumarate reductase (EC 1.3.5.4), rather than succinate dehydrogenase (EC 1.3.5.1), the enzyme which catalyses the “forward” reaction under aerobic conditions. The succinate reacts with propionyl coenzyme A to generate methylmalonyl coenzyme A (via succinyl coenzyme A). The regeneration of propionyl coenzyme A from this compound is coupled to the production of one molecule of ATP [70, 71]. Thus, under anaerobic conditions the fluke is able to dismutate malate, producing ATP without net oxidation or reduction (Figure 1). Further ATP is produced from coupling the reduction catalysed by fumarate reductase to an electron transport chain [61, 63, 72]. The electrons required for this reaction are provided by reduced rholoquinone, generated by a modified form of mitochondrial complex I. In the fluke and under anaerobic conditions, complex I transfers electrons from NADH to rholoquinone and couples this reaction to the transport of protons across the inner mitochondrial membrane [73]. This generates a proton motive force and enables the synthesis of a limited amount of ATP, even in the absence of oxygen (Figure 1). Rholoquinone (Scheme 2) is a mobile, low redox potential electron carrier found in helminths (and some bacteria) which are able to generate proton motive forces in the absence of a terminal electron acceptor such as oxygen [73-77]. The synthetic pathway for rholoquinone appears to be very similar to that of ubiquinone; indeed, it has been speculated that only the final reaction differs [78].

Although *F. hepatica* remains one of the best characterised helminth parasites in terms of its anaerobic metabolic adaptations, similar pathways have been demonstrated or inferred in a variety of other species. These include the trematodes *Schistosoma mansoni* [79], *Calicophoron ijimai* [80] and *Paragonimus westermani* [81], the nematodes *Ascaris suum* [82-85], *Setaria digitata* [86] and *Haemonchus contortus* [87] and the cestodes *Spirometra mansonioides* (*Diphyllobothrium mansonioides*) [88], *Hymenolepis diminuta* [89], *Hymenolepis microstoma* [90] and *Taenia crassiceps* [91].



## Helminth glycolytic enzymes: current state of knowledge

Although genome sequences are available for some helminths, our level of knowledge about the structures and enzymology of helminth enzymes lags substantially behind that for humans and other well-studied species. In particular, detailed comparative studies between parasite and host enzymes are relatively rare. However, the identification of subtle differences in structure, mechanism or other biochemical properties may reveal aspects which could be targeted in the design of inhibitors specific to parasite proteins.

The first committed step in glycolysis is catalysed by hexokinase (EC 2.7.1.1). RNAi, overexpression and enzymological studies have validated this enzyme as a target in *Trypanosoma brucei*. In this organism, a 60% reduction in hexokinase activity resulting from silencing the corresponding gene by RNAi was sufficient to kill the parasite [92]. Sequencing of hexokinase from *Haemonchus contortus* revealed two insertions (compared to the human sequence) located on the surface of the enzyme which were suggested as possible sites that could be targeted by inhibitors [93]. However, no biochemical work has been done to follow up this proposal. *Brugia malayi* hexokinase is tetrameric (compared to the monomeric and dimeric forms more commonly seen in mammals) and has different kinetic parameters to the human enzyme [94, 95]. *S. mansoni* hexokinase is inhibited by 5-thio-D-glucose (Scheme 3) [96]. However, this compound also inhibits mammalian hexokinase [82]. Modified monosaccharides have been suggested as general inhibitors or antimetabolites targeting hexokinase [97]; however, little work has been done to exploit this suggestion with hexokinases from helminth parasites.

Glucose 6-phosphate isomerase (phosphoglucose isomerase; EC 5.3.1.9) catalyses the conversion of glucose 6-phosphate to fructose 6-phosphate. In the cestode *Echinococcus multilocularis*, the enzyme is involved in pathogen-host interactions as well as glycolysis. In order to interact with the

host, the enzyme must be released from the cells and, as a consequence, host animals develop an immune response towards the enzyme [98]. This dual role suggests that antagonism of the enzyme's actions may disrupt both the energy metabolism of the organism and the interaction with the host. Sugar phosphates (and related compounds) inhibit *S. mansoni* glucose 6-phosphate isomerase; 5-phospho-D-arabinonate (Scheme 3) was the most potent inhibitor tested [99]. However, this compound also inhibits the human enzyme to a similar extent [100].

Phosphofructokinase is a proven target of trivalent antimonials (see above). In the filarial parasite *Setaria cervi*, the enzyme may act as a secondary target for the anthelmintic suramin (Scheme 3) [101]. The enzyme has been characterised from a number of other species, including the nematodes *Teladorsagia circumcincta* [102] and *A. suum* [103, 104], the trematode *F. hepatica* [105-107] and the cestode *Hymenolepis diminuta* [108]. To date, no compounds have been identified which mimic the worm clearing effectiveness of the trivalent antimonials but lack the side-effects. A similar picture emerges for aldolase (EC 4.1.2.13), the enzyme which catalyses the splitting of fructose 1,6-bisphosphate. Aldolase from the filarial nematode *Onchocerca volvulus* is secreted from the organism and induces an immune response in the host [109]. The enzyme from a number of helminths including *S. mansoni*, *A. suum*, *Heterodera glycines* and *Globodera rostochiensis* has also been characterised [110-112]. The viability of the plant parasitic nematode *Heterodera glycines* is reduced when the organism infects genetically modified plants which express RNAi targeted against its aldolase gene [113], thus demonstrating that this enzyme has potential as a drug target.

Triose phosphate isomerase (TPI; EC 5.3.1.1) catalyses the interconversion of glyceraldehyde 3-phosphate and dihydroxyacetone phosphate, thus ensuring that all six carbon atoms from glucose are ultimately converted to pyruvate by glycolysis. TPI from the cestode *Taenia solium* shows few biochemical differences from the enzyme from one of the parasite's main hosts, the pig [114, 115]. This enzyme can be noncompetitively inhibited by antibodies (and Fab fragments derived therefrom) raised against it [116]. TPI from the trematodes *F. hepatica* and *S. mansoni* have both been

biochemically characterised [117, 118]. Phosphoenolpyruvate (Scheme 3) is an inhibitor of *F. hepatica* TPI; this inhibition is approximately 10-fold weaker than observed with the human enzyme [117, 119]. The structures of the enzyme from both species have been modelled and the *S. mansoni* enzyme contains a small loop on the surface (Ser-157 to Asp-159) which is not present in the human enzyme; this may be a site for immune recognition of the parasite enzyme [118, 120]. Otherwise, the fluke enzymes show high predicted structural similarity to the human ones [117, 118]. In a number of unicellular parasites, covalent modification of TPI at surface-exposed cysteine residues has proved to be a successful strategy for the identification of species-specific TPI inhibitors [121-128]. One of these residues is conserved in *S. mansoni* TPI (as Cys-221), suggesting that there is potential for a similar approach. An alternative strategy, which has also been employed in unicellular parasites, has been to discover reagents which disrupt the dimer interface [129-131]. This may also have potential in parasitic helminths. TPI is externalised in a number of species and may play a role in host-parasite interactions. As such it has attracted attention as a vaccine candidate; for examples, see [132-135].

Glyceraldehyde 3-phosphate is oxidised and phosphorylated in a reaction catalysed by glyceraldehyde 3-phosphate dehydrogenase (GAPDH; EC 1.2.1.12). Interestingly, RNAi knockdown of the *GAPDH* gene in *S. mansoni* resulted in no detectable phenotypic changes. This was ascribed to metabolic plasticity of the organism [136]. Alternatively, it is possible that the protein product has a relatively long half-life in the organism and so GAPDH activity was not greatly affected by reduction in mRNA levels. The GAPDH from *H. contortus* is highly stable, both to thermal denaturation and pH [137]. The enzyme from *F. hepatica* behaves differently. In the absence of bound ligands, the enzyme is relatively unstable towards thermal denaturation but addition of glyceraldehyde 3-phosphate substantially increases the protein's stability [138]. GAPDH from *F. hepatica* also has interesting oligomeric properties. Addition of either glyceraldehyde 3-phosphate or NAD<sup>+</sup> shifts the tetramer-dimer equilibrium towards the dimer. The mammalian enzyme undergoes a similar transition, but both substrates are required [138, 139]. The dimeric form of the

rabbit enzyme is inactive as a dehydrogenase [139]. Further investigations are required to determine if the dimeric form of the *F. hepatica* enzyme is active. If, like the rabbit enzyme, it proves not to be, reagents which promote or stabilise the dimeric form over the tetramer may represent a potential strategy for antagonism of GAPDH activity in the parasite. GAPDH from *S. mansoni* is recognised and inhibited by antisera from infected animals [140]. It is one of the antigens recognised by humans who are more resistant to infection by the parasite [141]. Thus, GAPDH is also externalised by the parasite and may have some potential as a vaccine candidate [142-146]. In *H. contortus*, GAPDH interacts with the C3 complement subunit, inhibiting its function [147]. Antagonism of this interaction may also be a fruitful strategy for chemotherapy.

The first production of ATP in glycolysis is catalysed by the enzyme phosphoglycerate kinase. Vaccination with *F. hepatica* phosphoglycerate kinase gave some protection against infection which was ascribed to blockage of the fluke's energy metabolism [148]. However, no direct evidence of enzyme inhibition has been obtained to date. It is equally probably that the protection following vaccination results from the disruption of some interaction between surface-expressed enzyme and the host. A tegumental location for the enzyme in *Clonorchis sinensis* supports the latter hypothesis [149]. In most eukaryotes, phosphoglyceromutase requires a tightly bound 2,3-bisphospho-D-glycerate cofactor. However, nematodes have a cofactor-independent phosphoglyceromutase (EC 5.4.2.12) [150]. In addition to the cofactor requirement the two types of phosphoglyceromutase differ in sequence, structure and catalytic mechanism. The nematode enzyme has attracted considerable attention as a potential drug target due to these differences from the host enzyme [151-154]. A number of potential inhibitors have been identified by computational chemistry methods (Scheme 4); however these have yet to be tested *in vitro* or *in vivo* [151]. In the non-parasitic nematode, *Caenorhabditis elegans*, RNAi studies have demonstrated that the enzyme is essential for viability [150]. However, recent high throughput screening has thrown doubt onto the "druggability" of this enzyme. Although some inhibitors were discovered from the screen (Scheme 4), there were generally of relatively low affinity ( $IC_{50} > 10 \mu M$ ) [155]. Trematodes and cestodes have

cofactor-dependent (i.e. host-like) phosphoglyceromutases and relatively few of these enzymes have been characterised; one exception is the enzyme from *C. sinensis* [156]. It is an interesting paradox that the host-like enzymes in *F. hepatica* can be successfully and selectively inhibited by Clorsulon (see above), yet there appears to be issues with the druggability of the unusual nematode enzymes. This suggests that even subtle differences between host and parasite enzymes can be exploited and that, perhaps, the search for novel molecules which inhibit trematode and cestode phosphoglycerate kinase and/or phosphoglycerate mutase should be intensified.

Like the majority of glycolytic enzymes, enolase (EC 4.2.1.11), is externalised in many parasitic helminths and may play a role in host-pathogen interactions, particularly those involving the blood clotting system. Consequently the majority of efforts have focussed on testing the enzyme's potential as a vaccine candidate [157-166]. Silencing of the enolase gene in *C. sinensis* by RNAi resulted in significantly decreased survival of the worms, suggesting that the protein has potential as a drug target [167]. A modest reduction in survival (approximately 20%) was seen in similar experiments in *A. suum* [168]. In *S. mansoni*, enolase is a binding partner of the antimalarial drug mefloquine (Lariam; Scheme 3) [169]. This drug has some potential for the treatment of schistosomiasis and it is possible that enolase is a pharmacologically important target [169-171]. Interestingly, the mode of action in the malarial parasite is not well defined. The drug is believed to interact with haem (or its precursors) or to inhibit one of the enzymes involved in the synthesis of haem, possibly haem polymerase [172-175].

The final reaction of glycolysis results in the second generation of ATP and is catalysed by pyruvate kinase (EC 2.7.1.40). Where phosphoenolpyruvate is used to generate oxaloacetate (see above) this reaction is omitted and the helminth pyruvate kinases are relatively understudied. The *F. hepatica*, *Moniezia expansa* and *Dicrocoelium dendriticum* enzymes display positive cooperativity towards phosphoenolpyruvate and are inhibited by malate (Scheme 3) [176-178]. Malate inhibition does not

appear to have been detected in the mammalian enzyme. Since pyruvate kinase is unlikely to be active for the anaerobic parts of the parasite's life cycle its potential as a drug target may be limited.

### **Tricarboxylic acid cycle and oxidative phosphorylation: current state of knowledge**

Glycolysis and the TCA are linked by a reaction catalysed by pyruvate dehydrogenase enzyme complex (EC 1.2.4.1, EC 2.3.1.12 and EC 1.8.1.4). Pyruvate is oxidatively decarboxylated generating carbon dioxide, acetyl coenzyme A and NADH. The complex from *A. suum* has been extensively characterised [179-185]. The pyruvate dehydrogenase complex (PDC) is inactivated by phosphorylation (catalysed by pyruvate dehydrogenase kinase, EC 2.7.11.2) in higher eukaryotes [186]. However, it appears that this inactivation is more subtle and graded in *A. suum*. Whereas a single phosphorylation can result in complete inactivation in the human PDC, a greater degree of phosphorylation is required for inactivation in *A. suum* [187, 188]. This enables the complex to retain some activity even under relatively anaerobic conditions. In general, cestode PDCs are less sensitive to inhibition by NADH than those from aerobic organisms, including their hosts [179, 189]. Similarly the activation of pyruvate dehydrogenase kinase by increased NADH levels is less in cestodes compared to mammals [190, 191].

Compared to the glycolytic enzymes, the TCA enzymes from helminth parasites have, in general, received less attention. A recent gene knockdown study has shown that down-regulation of the genes encoding citrate synthase (EC 2.3.3.1), aconitase (EC 4.2.1.3) and malate dehydrogenase block mitosis in *C. elegans* suggesting that selective inhibition of this pathway may be viable in the treatment of nematode infections [192]. An initial characterisation of citrate synthase from *F. hepatica* has been carried out, but this was hampered by difficulties in purifying the recombinant protein [193]. Mammalian  $\alpha$ -ketoglutarate dehydrogenase (EC 1.2.4.2) is up-regulated by calcium ions, but the enzyme from *F. hepatica* is not [194, 195]. The precise molecular nature and

mechanisms of this difference has not been elucidated, nor has it been exploited in the discovery of selective inhibitors. Fumarase (EC 4.2.1.2) from *A. suum* has been recombinantly expressed and purified in good yield, but no inhibitors of this enzyme have been reported [196]. Similarly, recombinant mitochondrial malate dehydrogenase from *C. sinensis* has been produced and partially characterised [197, 198]. 4,4'-Bisdimethylaminodiphenylcarbinol (Michler's hydrol; Scheme 5) inhibits the mitochondrial enzyme from this species but not the cytoplasmic isoform [198]. The mechanism of this inhibition has not been determined. Filarin (vinorelbine; Scheme 5), a cancer chemotherapeutic synthesised from precursors derived from the rosy periwinkle *Catharanthus roseus*, inhibits malate dehydrogenase from the filarial worm, *Setaria digitata* [199].

### **Other metabolic pathways**

Some other metabolic pathways have received attention over the years. Of particular interest is the "shunt" which links cytoplasmic phosphoenolpyruvate to mitochondrial oxaloacetate. Phosphoenolpyruvate-carboxykinase (PEPCK; EC 4.1.1.32) catalyses the first step of this shunt. The enzyme from the cestode *Raillietina echinobothrida* is activated by a variety of plant extracts [200]. PEPCK from another cestode, *Hymenolepis diminuta*, is inhibited by  $\alpha$ -ketoglutarate (Scheme 6) [201]. The mammalian enzyme is also inhibited by this TCA intermediate [202].

Nafuredin (Scheme 6) inhibits mitochondrial complexes I and II in helminths. When assayed against complex I it competed with rodoquinone. It demonstrated anthelmintic activity against *H. contortus* in trials with experimentally infected sheep and against mice infected with the cestode *Hymenolepis nana* [203]. A related  $\gamma$ -lactone compound nafuredin- $\gamma$  (Scheme 6) also has activity against complex I [204]. *E. multilocularis* complex I is inhibited by quinazoline (Scheme 6) and this compound kills the parasite [205]. This compound, and its derivatives, also inhibit mammalian

mitochondrial complex I [206]. So, the challenge would be to identify derivatives which selectively inhibit the complex from helminths.

The Leloir pathway converts galactose into the glycolytic intermediate glucose 6-phosphate. This pathway is essential in unicellular parasites from the genus *Trypanosoma* since they are unable to take up galactose from the environment and rely on “reversing” some of the Leloir pathway reactions in order to generate galactose for glycoprotein synthesis [207-211]. Thus, inhibition of GALE in these species has potential for the development of novel therapeutics [212-215]. Six inhibitors of *F. hepatica* UDP-galactose 4-epimerase (EC 5.1.3.2) have been identified; two showed good selectivity over the human enzyme [216]. These compounds were 5-fluoroorotate (5-FOA) and a peptide derivative, N-[(benzyloxy)carbonyl]leucyltryptophan (Scheme 6). Interestingly, orotate (which differs from 5-FOA only by the absence of the fluorine atom) demonstrated essentially no selectivity between the human and parasite enzymes. This loss of selectivity arises from two factors: a 20-fold drop in the affinity for the fluke enzyme and 50-fold increase in the affinity for the human one [216]. The rationale for targeting GALE was based on the devastating symptoms of severe forms of GALE deficiency (type III galactosemia) in humans [217]. However, it remains to be formally demonstrated that targeting the enzyme in helminth parasites will result in sufficient levels of impairment. Unlike in trypanosomes, there is no evidence that the enzyme is essential for the production of galactose. However, the tegument of many helminths contains complex glycoproteins and it is likely that the disruption of the Leloir pathway would lead to alterations in this structure potentially altering parasite-host interactions [218-226]. Like many of the glycolytic enzymes, GALE may also have potential as a vaccine against helminth infections [227].

Carnitine palmitoyl transferase 1 (CPT1; EC 2.3.1.21) is a key enzyme in the transfer of fatty acids into the mitochondria prior to their  $\beta$ -oxidation. Inhibition of CPT1 in *S. mansoni* by etomoxir (Scheme 6) resulted in complete inhibition of egg production [228]. Etomoxir inhibits CPT1 in a variety of species, including humans [229]. The etomoxir treated worms themselves remained



viable, although with decreased oxygen consumption resulting from lower rates of oxidative phosphorylation [228]. Thus, it can be concluded that oxidative phosphorylation of NADH resulting from  $\beta$ -oxidation of fatty acids is essential for egg production in this species. Blocking this process may have value in breaking infection cycles and reducing the pathological effects associated with egg production. However, it seems unlikely that it would kill adult worms.

Arginase (EC 3.5.3.1) from *S. mansoni* is a rare example of a helminth metabolic enzyme for which the crystal structure in the presence of an inhibitor is known [230]. The enzyme catalyses the hydrolysis of arginine to produce urea and ornithine. In helminths, this reaction is thought to be important in proline biosynthesis [231]. It has also been hypothesised that it reduces the amount of arginine in the parasite. Doing so may assist in immune evasion since arginine is a key precursor of nitric oxide (NO) which is produced in macrophages and stimulates the cytotoxic activities of these cells [232, 233]. A druggable region of the protein has been identified and this site can accommodate a range of amino acid-like molecules [230]. Of particular interest is a cleft in this region which can accommodate substituents on the  $\alpha$ -carbon of amino acids. This enables the protein to bind to  $\alpha,\alpha$ -disubstituted amino acids, such as (R)-2-amino-6-borono-2-[2-(piperidin-1-yl)ethyl]hexanoic acid (Scheme 6). The cleft in the *S. mansoni* enzyme is more non-polar than the equivalent cleft in the human enzyme and it has been suggested that species specific reagents could be designed by exploiting this fact [230].

### **Unmet research needs**[U1]

Fundamental research on parasitic helminths is limited in compared to fields such as cancer, heart disease or HIV research. This results in a relatively small knowledge base to exploit in the discovery of novel therapeutics. Despite differences in metabolic pathways being elucidated in the 1970s and 1980s, few attempts have been made to exploit these in drug discovery. The number of crystal

structures of helminth proteins is small. Although there has been some successful inhibitor discovery based on molecular models (e.g. [216]), experimental structures are generally considered superior to models. Homology models, by their nature, are based on known structures. Thus, while they predict the overall fold very well, they are poor at estimating the structures of regions of the protein which differ markedly from the templates. Yet it is these very differences that may provide the key to the design of reagents which specifically inhibit helminth enzymes. Therefore, [a critical research need is a larger number of experimental structures of helminth metabolic enzymes.](#)

While it may be self-evident to biochemists that disrupting central carbon metabolism pathways (especially, perhaps, glycolysis) is highly likely to result in death of the organism, drug discovery scientists may require more convincing. Therefore, [experiments demonstrating the vital nature of key metabolic enzymes are required.](#) Although RNAi is often considered to be the “gold standard” in such experiments, a note of caution should be sounded. RNAi reduces the amount of mRNA transcript for a specific gene: it has not direct effect on the levels of protein. Protein concentrations will only decrease as the molecules are degraded and not replaced (since there is no mRNA). Metabolic enzymes are typically long-lived and may, therefore, persist for days (or longer) in the cell [234]. Therefore, lack of a phenotype after only a few days’ exposure to RNAi is not conclusive evidence that the protein is not vital. In such experiments it will be necessary to verify that protein levels are depleted (through activity assays or western blotting). Long exposures to the RNAi may also be necessary and, in some cases, this may not be practical. If so, alternative approaches may be necessary such as enzyme inhibition *in vivo*. This may require us to rediscover the “old” literature: [the discovery of many metabolic pathways relied, in part, on the use of specific enzyme inhibitors](#) (for a famous example, see [235]).

Since single point inhibition of pathways can result in compensatory mechanisms within the cell, it may be better to consider pathways as a whole. [Thus the development of systems biology approaches to helminth metabolism is desirable.](#) Much of the data to build the models already

exists. Many helminth metabolic enzymes were purified from native sources in the 1970s and 1980s and their kinetic parameters determined. This is complemented by more recent data derived from studies on recombinant proteins.

The anaerobic metabolism of many helminths relies on the partial reversal of the TCA and the use of rhodoquinone in a modified electron transport pathway (Figure 1; Scheme 2). A greater understanding of this process, in particular [the synthesis of rhodoquinone would be useful](#). Targeting the synthesis of rhodoquinone (which does not occur in the host) would, in theory, prevent this anaerobic electron transport without damaging the host.

Ultimately, if existing knowledge and new work is to lead towards new drugs to treat helminth infections, [selective inhibitors need to be discovered](#). This is likely to come from a combination of high throughput screening and computational chemistry approaches. However, as in other therapeutic areas, it is likely that the majority of inhibitors discovered will be useless as drugs. Either the compounds will fail to penetrate cells (and thus never have the opportunity to bind to the target) or they will prove equally toxic to the host and parasite. In the majority of helminths, the only way to test the efficacy of compounds is on live worms in culture or on artificially infected animals. Ideally, cell culture systems would be available to enable intermediate stage testing and a relatively low cost method to eliminate some compounds before proceeding to more complex test systems. Thus, the development of [parasitic helminth cell culture systems](#) is another significant, unmet research need.

## **Conclusions**

Inhibition of metabolic pathways in parasitic helminths would, almost certainly, result in reduced growth or death of the pathogen. The major challenges are a relative lack of knowledge about the biochemistry of the enzymes involved and the (perceived) difficulty of discovering reagents which

are selective for parasite enzymes over the host ones. In this respect, the case of phosphoglyceromutase (described above) represents a cautionary tale. The nematode enzyme has many features of an “ideal” drug target. It is likely to be essential to the organism, it is readily assayable *in vitro* and, critically, it differs in structure, sequence and mechanism from the host enzyme. In theory, [compounds which block this enzyme’s activity should kill the helminth without affecting the host](#)[U3]. Yet, a recent study considered the enzyme to be “undruggable” [155]. In contrast, the trematode phosphoglyceromutase is similar in sequence (and, therefore, presumably structure and mechanism) to the mammalian enzyme. [This enzyme is a target of the anthelmintic drug Clorsulon](#)[U4] [51]. If this tale teaches us anything, it is that sometimes dogma should be avoided and that there may be merit in attempting to find the next Clorsulon, i.e. a selective inhibitor of a parasitic helminth metabolic enzyme.

### **Acknowledgements**

The author wishes to thank [colleagues at Queen’s University, Belfast for introducing him](#)[A5] to the field of helminth parasitology.

## References

- [1] Hotez, PJ, Brindley, PJ, Bethony, JM, King, CH, Pearce, EJ, Jacobson, J, [A6] Helminth infections: the great neglected tropical diseases. *J.Clin.Invest.* 2008; 118: 1311-21.
- [2] Hotez, PJ, Molyneux, DH, Fenwick, A, Kumaresan, J, Sachs, SE, Sachs, JD, Savioli, L. Control of neglected tropical diseases. *N.Engl.J.Med.* 2007; 357: 1018-27.
- [3] McLeod, RS. Costs of major parasites to the Australian livestock industries. *Int.J.Parasitol.* 1995; 25: 1363-7.
- [4] Utzinger, J, Becker, SL, Knopp, S, Blum, J, Neumayr, AL, Keiser, J, Hatz, CF. Neglected tropical diseases: diagnosis, clinical management, treatment and control. *Swiss Med.Wkly.* 2012; 142: w13727.
- [5] Steinmann, P, Keiser, J, Bos, R, Tanner, M, Utzinger, J Schistosomiasis and water resources development: systematic review, meta-analysis, and estimates of people at risk. *Lancet Infect.Dis.* 2006; 6: 411-25.
- [6] Robinson, MW, Dalton, JP Zoonotic helminth infections with particular emphasis on fasciolosis and other trematodiasis. *Phil.Trans.R.Soc.Lond.B.Biol.Sci.* 2009; 364: 2763-76.
- [7] Brennan, GP, Fairweather, I, Trudgett, A, Hoey, E, McCoy, McConville, M, Meaney, M, Robinson, M, McFerran, N, Ryan, L, Lanusse, C, Mottier, L, Alvarez, L, Solana, H, Virkel, G, Brophy, PM Understanding triclabendazole resistance. *Exp.Mol.Pathol.* 2007; 82: 104-9.
- [8] Brockwell, YM, Elliott, TP, Anderson, GR, Stanton, R, Spithill, TW, Sangster, NC Confirmation of *Fasciola hepatica* resistant to triclabendazole in naturally infected Australian beef and dairy cattle. *Int J Parasitol Drugs Drug Resist* 2014; 4: 48-54.

- [9] Fairweather, I Triclabendazole progress report, 2005-2009: an advancement of learning? J.Helminthol. 2009; 83: 139-50.
- [10] Alvarez-Sanchez, MA, Mainar-Jaime, RC, Perez-Garcia, J, Rojo-Vazquez, FA Resistance of *Fasciola hepatica* to triclabendazole and albendazole in sheep in Spain. Vet.Rec. 2006; 159: 424-5.
- [11] Moll, L, Gaasenbeek, CP, Vellema, P, Borgsteede, FH Resistance of *Fasciola hepatica* against triclabendazole in cattle and sheep in The Netherlands. Vet.Parasitol. 2000; 91: 153-8.
- [12] Mitchell, GB, Maris, L, Bonniwell, MA Triclabendazole-resistant liver fluke in Scottish sheep. Vet.Rec. 1998; 143: 399.
- [13] Thomas, I, Coles, GC, Duffus, K Triclabendazole-resistant *Fasciola hepatica* in southwest Wales. Vet.Rec. 2000; 146: 200.
- [14] Overend, DJ, Bowen, FL Resistance of *Fasciola hepatica* to triclabendazole. Aust.Vet.J. 1995; 72: 275-6.
- [15] Winkelhagen, AJ, Mank, T, de Vries, PJ, Soetekouw, R Apparent triclabendazole-resistant human *Fasciola hepatica* infection, the Netherlands. Emerg.Infect.Dis. 2012; 18: 1028-9.
- [16] Wang, W, Wang, L, Liang, YS Susceptibility or resistance of praziquantel in human schistosomiasis: a review. Parasitol.Res. 2012; 111: 1871-7.
- [17] Fallon, PG, Doenhoff, MJ Drug-resistant schistosomiasis: resistance to praziquantel and oxamniquine induced in *Schistosoma mansoni* in mice is drug specific. Am.J.Trop.Med.Hyg. 1994; 51: 83-8.
- [18] Gonzalez, P, Gonzalez, FA, Ueno, K Ivermectin in human medicine, an overview of the current status of its clinical applications. Curr.Pharm.Biotechnol. 2012; 13: 1103-9.

- [19] Carmichael, I, Visser, R, Schneider, D, Soll, M *Haemonchus contortus* resistance to ivermectin. J.S.Afr.Vet.Assoc. 1987; 58: 93.
- [20] van Wyk, JA, Malan, FS Resistance of field strains of *Haemonchus contortus* to ivermectin, closantel, rafoxanide and the benzimidazoles in South Africa. Vet.Rec. 1988; 123: 226-8.
- [21] Osei-Atweneboana, MY, Awadzi, K, Attah, SK, Boakye, DA, Gyapong, JO, Prichard, RK Phenotypic evidence of emerging ivermectin resistance in *Onchocerca volvulus*. PLoS Negl Trop.Dis. 2011; 5: e998.
- [22] Jabbar, A, Iqbal, Z, Kerboeuf, D, Muhammad, G, Khan, MN, Afaq, M Anthelmintic resistance: the state of play revisited. Life Sci. 2006; 79: 2413-31.
- [23] Scott, I, Pomroy, WE, Kenyon, PR, Smith, G, Adlington, B, Moss, A Lack of efficacy of monepantel against *Teladorsagia circumcincta* and *Trichostrongylus colubriformis*. Vet.Parasitol. 2013; 198: 166-71.
- [24] Taman, A, Azab, M Present-day anthelmintics and perspectives on future new targets. Parasitol.Res. 2014; 113: 2425-33.
- [25] Stannard, JN, Horecker, BL The *in vitro* inhibition of cytochrome oxidase by azide and cyanide. J.Biol.Chem. 1948; 172: 599-608.
- [26] Hughes, MF Arsenic toxicity and potential mechanisms of action. Toxicol.Lett. 2002; 133: 1-16.
- [27] Orosz, F, Olah, J, Ovadi, J Triosephosphate isomerase deficiency: new insights into an enigmatic disease. Biochim.Biophys.Acta 2009; 1792: 1168-74.
- [28] Pey, AL, Maggi, M, Valentini, G Insights into human phosphoglycerate kinase 1 deficiency as a conformational disease from biochemical, biophysical, and in vitro expression analyses. J.Inherit.Metab.Dis. 2014; .

- [29] Bouteldja, N, Timson, DJ The biochemical basis of hereditary fructose intolerance. *J.Inherit.Metab.Dis.* 2010; 33: 105-12.
- [30] McCorvie, TJ, Timson, DJ Structural and molecular biology of type I galactosemia: disease-associated mutations. *IUBMB Life* 2011; 63: 949-54.
- [31] McCorvie, TJ, Timson, DJ The structural and molecular biology of type I galactosemia: Enzymology of galactose 1-phosphate uridylyltransferase. *IUBMB Life* 2011; 63: 694-700.
- [32] Bonnet, R, Pavlovic, S, Lehmann, J, Rommelspacher, H The strong inhibition of triosephosphate isomerase by the natural  $\beta$ -carboline may explain their neurotoxic actions. *Neuroscience* 2004; 127: 443-53.
- [33] Mulichak, AM, Wilson, JE, Padmanabhan, K, Garavito, RM The structure of mammalian hexokinase-1. *Nat.Struct.Biol.* 1998; 5: 555-60.
- [34] Brady, RL, Cameron, A Structure-based approaches to the development of novel anti-malarials. *Curr.Drug Targets* 2004; 5: 137-49.
- [35] Lakhdar-Ghazal, F, Blonski, C, Willson, M, Michels, P, Perie, J Glycolysis and proteases as targets for the design of new anti-trypanosome drugs. *Curr.Top.Med.Chem.* 2002; 2: 439-56.
- [36] Srinivasan, V, Morowitz, HJ Ancient genes in contemporary persistent microbial pathogens. *Biol.Bull.* 2006; 210: 1-9.
- [37] Elf, SE, Chen, J Targeting glucose metabolism in patients with cancer. *Cancer* 2014; 120: 774-80.
- [38] Ganapathy-Kanniappan, S, Geschwind, JF Tumor glycolysis as a target for cancer therapy: progress and prospects. *Mol.Cancer.* 2013; 12: 152,4598-12-152.



- [39] Tennant, DA, Duran, RV, Gottlieb, E Targeting metabolic transformation for cancer therapy. Nat.Rev.Cancer. 2010; 10: 267-77.
- [40] Davis, [U7] A Comparative trials of antimonial drugs in urinary schistosomiasis. Bull.World Health Organ. 1968; 38: 197-227.
- [41] Bueding, E, Mansour, JM. The relationship between inhibition of phosphofructokinase activity and the mode of action of trivalent organic antimonials on *Schistosoma mansoni*. Br.J.Pharmacol.Chemother. 1957; 12: 159-65.
- [42] Su, JG, Mansour, JM, Mansour, TE. Purification, kinetics and inhibition by antimonials of recombinant phosphofructokinase from *Schistosoma mansoni*. Mol.Biochem.Parasitol. 1996; 81: 171-8.
- [43] Saz, HJ, Dunbar, GA. The effects of stibophen on phosphofructokinases and aldolases of adult filariids. J.Parasitol. 1975; 61: 794-801.
- [44] Mottram, JC, Coombs, GH. *Leishmania mexicana*: enzyme activities of amastigotes and promastigotes and their inhibition by antimonials and arsenicals. Exp.Parasitol. 1985; 59: 151-60.
- [45] Mishra, J, Saxena, A, Singh, S. Chemotherapy of leishmaniasis: past, present and future. Curr.Med.Chem. 2007; 14: 1153-69.
- [46] Mrozik, H, Bochis, RJ, Eskola, P, Matzuk, A, Waksmunski, S, Olen, LE, Schwartzkopf, G,Jr, Grodski, A, Linn, BO, Lusi, A, Wu, MT, Shunk, CH, Peterson, LH, Milkowski, JD, Hoff, DR, Kulsa, P, Ostlind, DA, Campbell, WC, Riek, RF, Harmon, RE. 4-Amino-6-(Trichloroethenyl)-1,3-Benzenedisulfonamide, a New, Potent Fasciolicide. J.Med.Chem. 1977; 20: 1225-7.
- [47] Wyckoff, JH,3rd, Bradley, RE. Efficacy of a benzenedisulfonamide against experimental *Fasciola hepatica* infections in calves. Am.J.Vet.Res. 1983; 44: 2203-4.
- [48] Martin, RJ Modes of action of anthelmintic drugs. Vet.J. 1997; 154: 11-34.

- [49] Schulman, MD, Ostlind, DA, Valentino, D Mechanism of action of MK-401 against *Fasciola hepatica*: inhibition of phosphoglycerate kinase. *Mol.Biochem.Parasitol.* 1982; 5: 133-45.
- [50] Schulman, MD, Valentino, D *Fasciola hepatica*: effect of 4-amino-6-trichloroethenyl-1,3-benzenedisulfonamide on glycolysis *in vitro*. *Exp.Parasitol.* 1980; 49: 206-15.
- [51] Schulman, MD, Valentino, D Purification, characterization and inhibition by MK-401 of *Fasciola hepatica* phosphoglyceromutase. *Mol.Biochem.Parasitol.* 1982; 5: 321-32.
- [52] Lankas, GR, Peter, CP Induction of reversible urothelial cell hyperplasia in rats by clorsulon, a flukicide with weak carbonic anhydrase inhibitory activity. *Food Chem.Toxicol.* 1992; 30: 297-306.
- [53] Chiu, SH, Sestokas, E, Taub, R, Walker, RW, Lu, AY Application of carbonic anhydrase affinity chromatography in study of tissue-bound residue of 4-amino-6-trichloroethenyl-1,3-benzenedisulfonamide (MK-401, clorsulon). *Drug Metab.Dispos.* 1985; 13: 374-6.
- [54] Meaney, M, Fairweather, I, Brennan, GP, McDowell, LS, Forbes, AB *Fasciola hepatica*: effects of the fasciolicide clorsulon *in vitro* and *in vivo* on the tegumental surface, and a comparison of the effects on young- and old-mature flukes. *Parasitol.Res.* 2003; 91: 238-50.
- [55] Meaney, M, Haughey, S, Brennan, GP, Fairweather, I Ultrastructural observations on oral ingestion and trans-tegumental uptake of clorsulon by the liver fluke, *Fasciola hepatica*. *Parasitol.Res.* 2005; 95: 201-12.
- [56] Meaney, M, Haughey, S, Brennan, GP, Fairweather, I A scanning electron microscope study on the route of entry of clorsulon into the liver fluke, *Fasciola hepatica*. *Parasitol.Res.* 2005; 95: 117-28.
- [57] Meaney, M, Fairweather, I, Brennan, GP, Forbes, AB Transmission electron microscope study of the ultrastructural changes induced in the tegument and gut of *Fasciola hepatica* following *in vivo* drug treatment with clorsulon. *Parasitol.Res.* 2004; 92: 232-41.

- [58] Tejada, P, Sanchez-Moreno, M, Monteoliva, M, Gomez-Banqueri, H Inhibition of malate dehydrogenase enzymes by benzimidazole anthelmintics. *Vet.Parasitol.* 1987; 24: 269-74.
- [59] Sarwal, S, Sanyal, SN, Khera, S In vitro effect of benzimidazole drugs on the enzymes of lipid metabolism in *Trichuris globulosa*. *J.Parasitol.* 1989; 75: 808-10.
- [60] Lacey, E The role of the cytoskeletal protein, tubulin, in the mode of action and mechanism of drug resistance to benzimidazoles. *Int.J.Parasitol.* 1988; 18: 885-936.
- [61] Tielens, AG Energy generation in parasitic helminths. *Parasitol.Today* 1994; 10: 346-52.
- [62] Oliva, PB Lactic acidosis. *Am.J.Med.* 1970; 48: 209-25.
- [63] Tielens, A.G.M. In *Metabolism*, J. P. Dalton Ed.; CAB International: Wallingford, UK, **1999**.
- [64] Tielens, AG, van der Meer, P, van den Bergh, SG The aerobic energy metabolism of the juvenile *Fasciola hepatica*. *Mol.Biochem.Parasitol.* 1981; 3: 205-14.
- [65] Prichard, RK Regulation of pyruvate kinase and phosphoenolpyruvate carboxykinase activity in adult *Fasciola hepatica* (Trematoda). *Int.J.Parasitol.* 1976; 6: 227-33.
- [66] Tielens, AG, van den Heuvel, JM, van den Bergh, SG Differences in intermediary energy metabolism between juvenile and adult *Fasciola hepatica*. *Mol.Biochem.Parasitol.* 1987; 24: 273-81.
- [67] van Vugt, F, van der Meer, P, van den Bergh, SG The formation of propionate and acetate as terminal processes in the energy metabolism of the adult liver fluke *Fasciola hepatica*. *Int.J.Biochem.* 1979; 10: 11-8.
- [68] Saz, HJ, deBruyn, B, de Mata, Z Acyl-CoA transferase activities in homogenates of *Fasciola hepatica* adults. *J.Parasitol.* 1996; 82: 694-6.
- [69] van Grinsven, KW, van Hellemond, JJ, Tielens, AG Acetate:succinate CoA-transferase in the anaerobic mitochondria of *Fasciola hepatica*. *Mol.Biochem.Parasitol.* 2009; 164: 74-9.

- [70] Kohler, P, Bryant, C, Behm, CA ATP synthesis in a succinate decarboxylase system from *Fasciola hepatica* mitochondria. *Int.J.Parasitol.* 1978; 8: 399-404.
- [71] Pietrzak, SM, Saz, HJ Succinate decarboxylation to propionate and the associated phosphorylation in *Fasciola hepatica* and *Spirometra mansonioides*. *Mol.Biochem.Parasitol.* 1981; 3: 61-70.
- [72] van Hellemond, JJ, van der Klei, A, van Weelden, SW, Tielens, AG Biochemical and evolutionary aspects of anaerobically functioning mitochondria. *Philos.Trans.R.Soc.Lond.B.Biol.Sci.* 2003; 358: 205,13; discussion 213-5.
- [73] Van Hellemond, JJ, Klockiewicz, M, Gaasenbeek, CP, Roos, MH, Tielens, AG Rhodoquinone and complex II of the electron transport chain in anaerobically functioning eukaryotes. *J.Biol.Chem.* 1995; 270: 31065-70.
- [74] Allen, PC Helminths: comparison of their rhodoquinone. *Exp.Parasitol.* 1973; 34: 211-9.
- [75] Van Hellemond, JJ, Tielens, AG Expression and functional properties of fumarate reductase. *Biochem.J.* 1994; 304 ( Pt 2): 321-31.
- [76] Ramirez-Ponce, MP, Ramirez, JM, Gimenez-Gallego, G Rhodoquinone as a constituent of the dark electron-transfer system of *Rhodospirillum rubrum*. *FEBS Lett.* 1980; 119: 137-40.
- [77] Miyadera, H, Hiraishi, A, Miyoshi, H, Sakamoto, K, Mineki, R, Murayama, K, Nagashima, KV, Matsuura, K, Kojima, S, Kita, K Complex II from phototrophic purple bacterium *Rhodospirillum rubrum* displays rhodoquinol-fumarate reductase activity. *Eur.J.Biochem.* 2003; 270: 1863-74.
- [78] Van Hellemond, JJ, Luijten, M, Flesch, FM, Gaasenbeek, CP, Tielens, AG Rhodoquinone is synthesized *de novo* by *Fasciola hepatica*. *Mol.Biochem.Parasitol.* 1996; 82: 217-26.

- [79] Tielens, AG, Horemans, AM, Dunnewijk, R, van der Meer, P, van den Bergh, SG The facultative anaerobic energy metabolism of *Schistosoma mansoni* sporocysts. *Mol.Biochem.Parasitol.* 1992; 56: 49-57.
- [80] Vykhrestyuk, NP, Burenina, EA, Yarygina, GV Fermentation and the properties of some enzymes of carbohydrate metabolism in the trematode *Calicophoron ijimai*. *Mol.Biochem.Parasitol.* 1984; 13: 29-38.
- [81] Takamiya, S, Wang, H, Hiraishi, A, Yu, Y, Hamajima, F, Aoki, T Respiratory chain of the lung fluke *Paragonimus westermani*: facultative anaerobic mitochondria. *Arch.Biochem.Biophys.* 1994; 312: 142-50.
- [82] Yamashita, T, Ino, T, Miyoshi, H, Sakamoto, K, Osanai, A, Nakamaru-Ogiso, E, Kita, K Rhodoquinone reaction site of mitochondrial complex I, in parasitic helminth, *Ascaris suum*. *Biochim.Biophys.Acta* 2004; 1608: 97-103.
- [83] Ma, YC, Funk, M, Dunham, WR, Komuniecki, R Purification and characterization of electron-transfer flavoprotein: rhodoquinone oxidoreductase from anaerobic mitochondria of the adult parasitic nematode, *Ascaris suum*. *J.Biol.Chem.* 1993; 268: 20360-5.
- [84] Kita, K, Takamiya, S, Furushima, R, Ma, YC, Suzuki, H, Ozawa, T, Oya, H Electron-transfer complexes of *Ascaris suum* muscle mitochondria. III. Composition and fumarate reductase activity of complex II. *Biochim.Biophys.Acta* 1988; 935: 130-40.
- [85] Saruta, F, Kuramochi, T, Nakamura, K, Takamiya, S, Yu, Y, Aoki, T, Sekimizu, K, Kojima, S, Kita, K Stage-specific isoforms of complex II (succinate-ubiquinone oxidoreductase) in mitochondria from the parasitic nematode, *Ascaris suum*. *J.Biol.Chem.* 1995; 270: 928-32.

- [86] Pettersen, EF, Goddard, TD, Huang, CC, Couch, GS, Greenblatt, DM, Meng, EC, Ferrin, TE UCSF Chimera--a visualization system for exploratory research and analysis. *J.Comput.Chem.* 2004; 25: 1605-12.
- [87] Roos, MH, Tielens, AG Differential expression of two succinate dehydrogenase subunit-B genes and a transition in energy metabolism during the development of the parasitic nematode *Haemonchus contortus*. *Mol.Biochem.Parasitol.* 1994; 66: 273-81.
- [88] Beach, DH, Mueller, JF, Holz, GG,Jr Benzoquinones in stages of the life-cycle of the cestode *Spirometra mansonioides*. *Mol.Biochem.Parasitol.* 1980; 1: 269-78.
- [89] Fioravanti, CF, Walker, DJ, Sandhu, PS Metabolic transition in the development of *Hymenolepis diminuta* (Cestoda). *Parasitol.Res.* 1998; 84: 777-82.
- [90] Fioravanti, CF Mitochondrial malate dehydrogenase, decarboxylating ("malic" enzyme) and transhydrogenase activities of adult *Hymenolepis microstoma* (Cestoda). *J.Parasitol.* 1982; 68: 213-20.
- [91] Zenka, J, Prokopic, J Malic enzyme, malate dehydrogenase, fumarate reductase and succinate dehydrogenase in the larvae of *Taenia crassiceps* (Zeder, 1800). *Folia.Parasitol.(Praha)* 1987; 34: 131-6.
- [92] Chambers, JW, Fowler, ML, Morris, MT, Morris, JC The anti-trypanosomal agent lonidamine inhibits *Trypanosoma brucei* hexokinase 1. *Mol.Biochem.Parasitol.* 2008; 158: 202-7.
- [93] Schmitt-Wrede, HP, Waldraff, A, Krucken, J, Harder, A, Wunderlich, F Characterization of a hexokinase encoding cDNA of the parasitic nematode *Haemonchus contortus*. *Biochim.Biophys.Acta* 1999; 1444: 439-44.
- [94] Singh, AR, Joshi, S, Arya, R, Kayastha, AM, Srivastava, KK, Tripathi, LM, Saxena, JK Molecular cloning and characterization of *Brugia malayi* hexokinase. *Parasitol.Int.* 2008; 57: 354-61.

- [95] Singh, AR, Joshi, S, Arya, R, Kayastha, AM, Saxena, JK Guanidine hydrochloride and urea-induced unfolding of *Brugia malayi* hexokinase. Eur.Biophys.J. 2010; 39: 289-97.
- [96] Tielens, AG, Houweling, M, Van den Bergh, SG The effect of 5-thioglucose on the energy metabolism of *Schistosoma mansoni* in vitro. Biochem.Pharmacol. 1985; 34: 3369-73.
- [97] Dills, WL,Jr, Meyer, WL Studies of 1-deoxy-D-fructose, 1-deoxy-D-glucitol, and 1-deoxy-D-mannitol as antimetabolites. Biochemistry 1976; 15: 4506-12.
- [98] Stadelmann, B, Spiliotis, M, Muller, J, Scholl, S, Muller, N, Gottstein, B, Hemphill, A *Echinococcus multilocularis* phosphoglucose isomerase (EmPGI): a glycolytic enzyme involved in metacestode growth and parasite-host cell interactions. Int.J.Parasitol. 2010; 40: 1563-74.
- [99] Shapiro, TA, Talalay, P *Schistosoma mansoni*: inhibition of glucosephosphate isomerase and glycolysis by sugar phosphates. Exp.Parasitol. 1982; 54: 196-201.
- [100] Chirgwin, JM, Noltmann, EA The enediolate analogue 5-phosphoarabinonate as a mechanistic probe for phosphoglucose isomerase. J.Biol.Chem. 1975; 250: 7272-6.
- [101] Sharma, B Modulation of phosphofructokinase (PFK) from *Setaria cervi*, a bovine filarial parasite, by different effectors and its interaction with some antifilarials. Parasit.Vectors 2011; 4: 227,3305-4-227.
- [102] Walker, LR, Simcock, DC, Pedley, KC, Simpson, HV, Brown, S The kinetics and regulation of phosphofructokinase from *Teladorsagia circumcincta*. Exp.Parasitol. 2012; 130: 348-53.
- [103] Gibson, GE, Harris, BG, Cook, PF Optimum activity of the phosphofructokinase from *Ascaris suum* requires more than one metal ion. Biochemistry 2006; 45: 2453-60.
- [104] Jagannatha Rao, GS, Cook, PF, Harris, BG Kinetic characterization of a T-state of *Ascaris suum* phosphofructokinase with heterotropic negative cooperativity by ATP eliminated. Arch.Biochem.Biophys. 1999; 365: 335-43.

- [105] Kamemoto, ES, Iltzsch, MH, Lan, L, Mansour, TE Phosphofructokinase from *Fasciola hepatica*: activation by phosphorylation and other regulatory properties distinct from the mammalian enzyme. Arch.Biochem.Biophys. 1987; 258: 101-11.
- [106] Kamemoto, ES, Mansour, TE Phosphofructokinase in the liver fluke *Fasciola hepatica*. Purification and kinetic changes by phosphorylation. J.Biol.Chem. 1986; 261: 4346-51.
- [107] Lloyd, GM Kinetic properties of phosphofructokinase (and fructose bisphosphatase) of the liver fluke, *Fasciola hepatica*. Int.J.Parasitol. 1983; 13: 475-81.
- [108] Sangster, NC, Mettrick, DF Effects of 5-hydroxytryptamine, cyclic AMP, AMP, and fructose 2,6-bisphosphate on phosphofructokinase activity in *Hymenolepis diminuta*. Comp.Biochem.Physiol.B. 1987; 88: 317-21.
- [109] McCarthy, JS, Wieseman, M, Tropea, J, Kaslow, D, Abraham, D, Lustigman, S, Tuan, R, Guderian, RH, Nutman, TB *Onchocerca volvulus* glycolytic enzyme fructose-1,6-bisphosphate aldolase as a target for a protective immune response in humans. Infect.Immun. 2002; 70: 851-8.
- [110] El-Dabaa, E, Mei, H, El-Sayed, A, Karim, AM, Eldesoky, HM, Fahim, FA, LoVerde, PT, Saber, MA Cloning and characterization of *Schistosoma mansoni* fructose-1,6-bisphosphate aldolase isoenzyme. J.Parasitol. 1998; 84: 954-60.
- [111] Kovaleva, ES, Masler, EP, Subbotin, SA, Chitwood, DJ Molecular Characterization of Aldolase from *Heterodera glycines* and *Globodera rostochiensis*. J.Nematol. 2005; 37: 292-6.
- [112] Dedman, JR, Lycan, AC, Gracy, RW, Harris, BG Studies on enzymes from parasitic helminths. IV. Purification and characterization of aldolase from the muscle tissue of *Ascaris suum*. Comp.Biochem.Physiol.B. 1973; 44: 291-305.



- [113] Youssef, RM, Kim, KH, Haroon, SA, Matthews, BF Post-transcriptional gene silencing of the gene encoding aldolase from soybean cyst nematode by transformed soybean roots. *Exp.Parasitol.* 2013; 134: 266-74.
- [114] Jimenez, L, Vibanco-Perez, N, Navarro, L, Landa, A Cloning, expression and characterisation of a recombinant triosephosphate isomerase from *Taenia solium*. *Int.J.Parasitol.* 2000; 30: 1007-12.
- [115] Jimenez, L, Fernandez-Velasco, DA, Willms, K, Landa, A A comparative study of biochemical and immunological properties of triosephosphate isomerase from *Taenia solium* and *Sus scrofa*. *J.Parasitol.* 2003; 89: 209-14.
- [116] Victor, SA, Yolanda, MF, Araceli, ZC, Lucia, J, Abraham, L Characterization of a monoclonal antibody that specifically inhibits triosephosphate isomerase activity of *Taenia solium*. *Exp.Parasitol.* 2013; 134: 495-503.
- [117] Zinsser, VL, Hoey, EM, Trudgett, A, Timson, DJ Biochemical characterisation of triose phosphate isomerase from the liver fluke *Fasciola hepatica*. *Biochimie* 2013; 95: 2182-9.
- [118] Zinsser, VL, Farnell, E, Dunne, DW, Timson, DJ Triose phosphate isomerase from the blood fluke *Schistosoma mansoni*: Biochemical characterisation of a potential drug and vaccine target. *FEBS Lett.* 2013; 587: 3422-7.
- [119] Gruning, NM, Rinnerthaler, M, Bluemlein, K, Mulleder, M, Wamelink, MM, Lehrach, H, Jakobs, C, Breitenbach, M, Ralser, M Pyruvate kinase triggers a metabolic feedback loop that controls redox metabolism in respiring cells. *Cell.Metab.* 2011; 14: 415-27.
- [120] Chen, B, Wen, JF The adaptive evolution divergence of triosephosphate isomerases between parasitic and free-living flatworms and the discovery of a potential universal target against flatworm parasites. *Parasitol.Res.* 2011; 109: 283-9.

- [121] Cabrera, N, Hernandez-Alcantara, G, Mendoza-Hernandez, G, Gomez-Puyou, A, Perez-Montfort, R Key residues of loop 3 in the interaction with the interface residue at position 14 in triosephosphate isomerase from *Trypanosoma brucei*. *Biochemistry* 2008; 47: 3499-506.
- [122] Rodriguez-Romero, A, Hernandez-Santoyo, A, del Pozo Yauner, L, Kornhauser, A, Fernandez-Velasco, DA Structure and inactivation of triosephosphate isomerase from *Entamoeba histolytica*. *J.Mol.Biol.* 2002; 322: 669-75.
- [123] Tellez-Valencia, A, Avila-Rios, S, Perez-Montfort, R, Rodriguez-Romero, A, Tuena de Gomez-Puyou, M, Lopez-Calahorra, F, Gomez-Puyou, A Highly specific inactivation of triosephosphate isomerase from *Trypanosoma cruzi*. *Biochem.Biophys.Res.Comm.* 2002; 295: 958-63.
- [124] Maithal, K, Ravindra, G, Balaram, H, Balaram, P Inhibition of *Plasmodium falciparum* triosephosphate isomerase by chemical modification of an interface cysteine. Electrospray ionization mass spectrometric analysis of differential cysteine reactivities. *J.Biol.Chem.* 2002; 277: 25106-14.
- [125] Garza-Ramos, G, Cabrera, N, Saavedra-Lira, E, Tuena de Gomez-Puyou, M, Ostoa-Saloma, P, Perez-Montfort, R, Gomez-Puyou, A Sulfhydryl reagent susceptibility in proteins with high sequence similarity--triosephosphate isomerase from *Trypanosoma brucei*, *Trypanosoma cruzi* and *Leishmania mexicana*. *Eur.J.Biochem.* 1998; 253: 684-91.
- [126] Enriquez-Flores, S, Rodriguez-Romero, A, Hernandez-Alcantara, G, De la Mora-De la Mora, I., Gutierrez-Castrellon, P, Carvajal, K, Lopez-Velazquez, G, Reyes-Vivas, H Species-specific inhibition of *Giardia lamblia* triosephosphate isomerase by localized perturbation of the homodimer. *Mol.Biochem.Parasitol.* 2008; 157: 179-86.
- [127] Enriquez-Flores, S, Rodriguez-Romero, A, Hernandez-Alcantara, G, Oria-Hernandez, J, Gutierrez-Castrellon, P, Perez-Hernandez, G, de la Mora-de la Mora, I., Castillo-Villanueva, A, Garcia-Torres, I, Mendez, ST, Gomez-Manzo, S, Torres-Arroyo, A, Lopez-Velazquez, G, Reyes-Vivas, H Determining the molecular mechanism of inactivation by chemical modification of triosephosphate

isomerase from the human parasite *Giardia lamblia*: a study for antiparasitic drug design. *Proteins* 2011; 79: 2711-24.

[128] Hernandez-Alcantara, G, Torres-Larios, A, Enriquez-Flores, S, Garcia-Torres, I, Castillo-Villanueva, A, Mendez, ST, de la Mora-de la Mora, I., Gomez-Manzo, S, Torres-Arroyo, A, Lopez-Velazquez, G, Reyes-Vivas, H, Oria-Hernandez, J Structural and Functional Perturbation of *Giardia lamblia* Triosephosphate Isomerase by Modification of a Non-Catalytic, Non-Conserved Region. *PLoS One* 2013; 8: e69031.

[129] Alvarez, G, Martinez, J, Aguirre-Lopez, B, Cabrera, N, Perez-Diaz, L, Gomez-Puyou, MT, Gomez-Puyou, A, Perez-Montfort, R, Garat, B, Merlino, A, Gonzalez, M, Cerecetto, H New chemotypes as *Trypanosoma cruzi* triosephosphate isomerase inhibitors: a deeper insight into the mechanism of inhibition. *J.Enzyme Inhib.Med.Chem.* 2013; In press: .

[130] Olivares-Illana, V, Rodriguez-Romero, A, Becker, I, Berzunza, M, Garcia, J, Perez-Montfort, R, Cabrera, N, Lopez-Calahorra, F, de Gomez-Puyou, MT, Gomez-Puyou, A Perturbation of the dimer interface of triosephosphate isomerase and its effect on *Trypanosoma cruzi*. *PLoS Negl Trop.Dis.* 2007; 1: e1.

[131] Singh, SK, Maithal, K, Balaram, H, Balaram, P Synthetic peptides as inactivators of multimeric enzymes: inhibition of *Plasmodium falciparum* triosephosphate isomerase by interface peptides. *FEBS Lett.* 2001; 501: 19-23.

[132] Dai, Y, Wang, X, Zhao, S, Tang, J, Zhang, L, Dai, J, Zeng, M, Lu, S, Zhu, Y, Su, C Construction and evaluation of replication-defective recombinant optimized triosephosphate isomerase adenoviral vaccination in *Schistosoma japonicum* challenged mice. *Vaccine* 2014; 32: 771-8.

[133] Zhu, Y, Lu, F, Dai, Y, Wang, X, Tang, J, Zhao, S, Zhang, C, Zhang, H, Lu, S, Wang, S Synergistic enhancement of immunogenicity and protection in mice against *Schistosoma japonicum* with codon optimization and electroporation delivery of SJTPI DNA vaccines. *Vaccine* 2010; 28: 5347-55.

- [134] Zhu, Y, Si, J, Harn, DA, Xu, M, Ren, J, Yu, C, Liang, Y, Yin, X, He, W, Cao, G *Schistosoma japonicum* triose-phosphate isomerase plasmid DNA vaccine protects pigs against challenge infection. *Parasitology* 2006; 132: 67-71.
- [135] Zhu, Y, Si, J, Harn, DA, Yu, C, Liang, Y, Ren, J, Yin, X, He, W, Hua, W The protective immunity of a DNA vaccine encoding *Schistosoma japonicum* Chinese strain triose-phosphate isomerase in infected BALB/C mice. *Southeast Asian J.Trop.Med.Public Health* 2004; 35: 518-22.
- [136] Boyle, JP, Wu, XJ, Shoemaker, CB, Yoshino, TP Using RNA interference to manipulate endogenous gene expression in *Schistosoma mansoni* sporocysts. *Mol.Biochem.Parasitol.* 2003; 128: 205-15.
- [137] Han, K, Xu, L, Yan, R, Song, X, Li, X Cloning, expression and characterization of NAD<sup>+</sup>-dependent glyceraldehyde-3-phosphate dehydrogenase of adult *Haemonchus contortus*. *J.Helminthol.* 2011; 85: 421-9.
- [138] Zinsser, VL, Hoey, EM, Trudgett, A, Timson, DJ Biochemical characterisation of glyceraldehyde 3-phosphate dehydrogenase (GAPDH) from the liver fluke, *Fasciola hepatica*. *Biochim.Biophys.Acta* 2014; 1844: 744-9.
- [139] Hoagland, VD,Jr, Teller, DC Influence of substrates on the dissociation of rabbit muscle D-glyceraldehyde 3-phosphate dehydrogenase. *Biochemistry* 1969; 8: 594-602.
- [140] Argiro, L, Doerig, C, Liabeuf, S, Bourgois, A, Romette, JL Production of Sm37-GAPDH, a major therapeutical target in human schistosomiasis. *Biotechnol.Bioeng.* 2000; 68: 136-41.
- [141] Goudot-Crozel, V, Caillol, D, Djabali, M, Dessein, AJ The major parasite surface antigen associated with human resistance to schistosomiasis is a 37-kD glyceraldehyde-3P-dehydrogenase. *J.Exp.Med.* 1989; 170: 2065-80.

- [142] Han, K, Xu, L, Yan, R, Song, X, Li, X Vaccination of goats with glyceraldehyde-3-phosphate dehydrogenase DNA vaccine induced partial protection against *Haemonchus contortus*. Vet.Immunol.Immunopathol. 2012; 149: 177-85.
- [143] Fang, Z, Tong, H, Zhang, S, Fang, H, Lu, S, Xu, B Construction of a recombinant plasmid harbouring the glyceraldehyde-3-phosphate dehydrogenase gene of periodic *Brugia malayi* and observation on DNA immunity. Indian.J.Med.Microbiol. 2012; 30: 193-7.
- [144] Erttmann, KD, Kleensang, A, Schneider, E, Hammerschmidt, S, Buttner, DW, Gallin, M Cloning, characterization and DNA immunization of an *Onchocerca volvulus* glyceraldehyde-3-phosphate dehydrogenase (Ov-GAPDH). Biochim.Biophys.Acta 2005; 1741: 85-94.
- [145] Veprek, P, Jezek, J, Velek, J, Tallima, H, Montash, M, El Ridi, R Peptides and multiple antigen peptides from *Schistosoma mansoni* glyceraldehyde 3-phosphate dehydrogenase: preparation, immunogenicity and immunoprotective capacity in C57BL/6 mice. J.Pept.Sci. 2004; 10: 350-62.
- [146] Muller-Schollenberger, V, Beyer, W, Schnitzler, P, Merckelbach, A, Roth, S, Kalinna, BH, Lucius, R Immunisation with *Salmonella typhimurium*-delivered glyceraldehyde-3-phosphate dehydrogenase protects mice against challenge infection with *Echinococcus multilocularis* eggs. Int.J.Parasitol. 2001; 31: 1441-9.
- [147] Sahoo, S, Murugavel, S, Devi, IK, Vedamurthy, GV, Gupta, SC, Singh, BP, Joshi, P Glyceraldehyde-3-phosphate dehydrogenase of the parasitic nematode *Haemonchus contortus* binds to complement C3 and inhibits its activity. Parasite Immunol. 2013; 35: 457-67.
- [148] Jaros, S, Jaros, D, Wesolowska, A, Zygnier, W, Wedrychowicz, H Blocking *Fasciola hepatica*'s energy metabolism - a pilot study of vaccine potential of a novel gene - phosphoglycerate kinase. Vet.Parasitol. 2010; 172: 229-37.

- [149] Hong, SJ, Seong, KY, Sohn, WM, Song, KY Molecular cloning and immunological characterization of phosphoglycerate kinase from *Clonorchis sinensis*. *Mol.Biochem.Parasitol.* 2000; 108: 207-16.
- [150] Zhang, Y, Foster, JM, Kumar, S, Fougere, M, Carlow, CK Cofactor-independent phosphoglycerate mutase has an essential role in *Caenorhabditis elegans* and is conserved in parasitic nematodes. *J.Biol.Chem.* 2004; 279: 37185-90.
- [151] Sharma, OP, Vadlamudi, Y, Liao, Q, Strodel, B, Suresh Kumar, M Molecular modeling, dynamics, and an insight into the structural inhibition of cofactor independent phosphoglycerate mutase isoform 1 from *Wuchereria bancrofti* using cheminformatics and mutational studies. *J.Biomol.Struct.Dyn.* 2013; 31: 765-78.
- [152] Dhamodharan, R, Hoti, SL, Sankari, T Characterization of cofactor-independent phosphoglycerate mutase isoform-1 (Wb-iPGM) gene: a drug and diagnostic target from human lymphatic filarial parasite, *Wuchereria bancrofti*. *Infect.Genet.Evol.* 2012; 12: 957-65.
- [153] Li, Z, Galvin, BD, Raverdy, S, Carlow, CK Identification and characterization of the cofactor-independent phosphoglycerate mutases of *Dirofilaria immitis* and its *Wolbachia* endosymbiont. *Vet.Parasitol.* 2011; 176: 350-6.
- [154] Raverdy, S, Zhang, Y, Foster, J, Carlow, CK Molecular and biochemical characterization of nematode cofactor independent phosphoglycerate mutases. *Mol.Biochem.Parasitol.* 2007; 156: 210-6.
- [155] Crowther, GJ, Booker, ML, He, M, Li, T, Raverdy, S, Novelli, JF, He, P, Dale, NR, Fife, AM, Barker, RH,Jr, Kramer, ML, Van Voorhis, WC, Carlow, CK, Wang, MW Cofactor-independent phosphoglycerate mutase from nematodes has limited druggability, as revealed by two high-throughput screens. *PLoS Negl Trop.Dis.* 2014; 8: e2628.

- [156] Song, L, Xu, Z, Yu, X Molecular cloning and characterization of a phosphoglycerate mutase gene from *Clonorchis sinensis*. Parasitol.Res. 2007; 101: 709-14.
- [157] Wang, X, Chen, W, Tian, Y, Mao, Q, Lv, X, Shang, M, Li, X, Yu, X, Huang, Y Surface display of *Clonorchis sinensis* enolase on *Bacillus subtilis* spores potentializes an oral vaccine candidate. Vaccine 2014; 32: 1338-45.
- [158] Liu, H, Zeng, H, Yao, Q, Yuan, J, Zhang, Y, Qiu, D, Yang, X, Yang, H, Liu, Z *Steinernema glaseri* surface enolase: molecular cloning, biological characterization, and role in host immune suppression. Mol.Biochem.Parasitol. 2012; 185: 89-98.
- [159] Chen, N, Yuan, ZG, Xu, MJ, Zhou, DH, Zhang, XX, Zhang, YZ, Wang, XW, Yan, C, Lin, RQ, Zhu, XQ *Ascaris suum* enolase is a potential vaccine candidate against ascariasis. Vaccine 2012; 30: 3478-82.
- [160] Wang, X, Chen, W, Hu, F, Deng, C, Zhou, C, Lv, X, Fan, Y, Men, J, Huang, Y, Sun, J, Hu, D, Chen, J, Yang, Y, Liang, C, Zheng, H, Hu, X, Xu, J, Wu, Z, Yu, X *Clonorchis sinensis* enolase: identification and biochemical characterization of a glycolytic enzyme from excretory/secretory products. Mol.Biochem.Parasitol. 2011; 177: 135-42.
- [161] de la Torre-Escudero, E, Manzano-Roman, R, Perez-Sanchez, R, Siles-Lucas, M, Oleaga, A Cloning and characterization of a plasminogen-binding surface-associated enolase from *Schistosoma bovis*. Vet.Parasitol. 2010; 173: 76-84.
- [162] Kiel, M, Josh, P, Jones, A, Windon, R, Hunt, P, Kongsuwan, K Identification of immuno-reactive proteins from a sheep gastrointestinal nematode, *Trichostrongylus colubriformis*, using two-dimensional electrophoresis and mass spectrometry. Int.J.Parasitol. 2007; 37: 1419-29.
- [163] Marcilla, A, Perez-Garcia, A, Espert, A, Bernal, D, Munoz-Antoli, C, Esteban, JG, Toledo, R *Echinostoma caproni*: identification of enolase in excretory/secretory products, molecular cloning, and functional expression. Exp.Parasitol. 2007; 117: 57-64.

- [164] Ramajo-Hernandez, A, Perez-Sanchez, R, Ramajo-Martin, V, Oleaga, A *Schistosoma bovis*: plasminogen binding in adults and the identification of plasminogen-binding proteins from the worm tegument. *Exp.Parasitol.* 2007; 115: 83-91.
- [165] Bernal, D, de la Rubia, JE, Carrasco-Abad, AM, Toledo, R, Mas-Coma, S, Marcilla, A Identification of enolase as a plasminogen-binding protein in excretory-secretory products of *Fasciola hepatica*. *FEBS Lett.* 2004; 563: 203-6.
- [166] Jolodar, A, Fischer, P, Bergmann, S, Buttner, DW, Hammerschmidt, S, Brattig, NW Molecular cloning of an alpha-enolase from the human filarial parasite *Onchocerca volvulus* that binds human plasminogen. *Biochim.Biophys.Acta* 2003; 1627: 111-20.
- [167] Wang, X, Chen, W, Tian, Y, Huang, Y, Li, X, Yu, X RNAi-mediated silencing of enolase confirms its biological importance in *Clonorchis sinensis*. *Parasitol.Res.* 2014; 113: 1451-8.
- [168] Chen, N, Xu, MJ, Nisbet, AJ, Huang, CQ, Lin, RQ, Yuan, ZG, Song, HQ, Zhu, XQ *Ascaris suum*: RNAi mediated silencing of enolase gene expression in infective larvae. *Exp.Parasitol.* 2011; 127: 142-6.
- [169] Manneck, T, Keiser, J, Muller, J Mefloquine interferes with glycolysis in schistosomula of *Schistosoma mansoni* via inhibition of enolase. *Parasitology* 2012; 139: 497-505.
- [170] Xiao, SH Mefloquine, a new type of compound against schistosomes and other helminthes in experimental studies. *Parasitol.Res.* 2013; 112: 3723-40.
- [171] Holtfreter, MC, Loebermann, M, Klammt, S, Sombetzki, M, Bodammer, P, Riebold, D, Kinzelbach, R, Reisinger, EC *Schistosoma mansoni*: schistosomicidal effect of mefloquine and primaquine in vitro. *Exp.Parasitol.* 2011; 127: 270-6.



- [172] Combrinck, JM, Mabotha, TE, Ncokazi, KK, Ambele, MA, Taylor, D, Smith, PJ, Hoppe, HC, Egan, TJ Insights into the role of heme in the mechanism of action of antimalarials. *ACS Chem.Biol.* 2013; 8: 133-7.
- [173] Bachhawat, K, Thomas, CJ, Surolia, N, Surolia, A Interaction of chloroquine and its analogues with heme: An isothermal titration calorimetric study. *Biochem.Biophys.Res.Commun.* 2000; 276: 1075-9.
- [174] Sullivan, DJ,Jr, Matile, H, Ridley, RG, Goldberg, DE A common mechanism for blockade of heme polymerization by antimalarial quinolines. *J.Biol.Chem.* 1998; 273: 31103-7.
- [175] Chou, AC, Fitch, CD Control of heme polymerase by chloroquine and other quinoline derivatives. *Biochem.Biophys.Res.Commun.* 1993; 195: 422-7.
- [176] Behm, CA, Bryant, C Regulatory properties of a partially purified preparation of pyruvate kinase from *Fasciola hepatica*. *Int.J.Parasitol.* 1980; 10: 107-14.
- [177] Kohler, P Metabolic role of pyruvate kinase in the trematode *Dicrocoelium dendriticum*. *Comp.Biochem.Physiol.B.* 1974; 49: 335-44.
- [178] Bryant, C Metabolic regulation in *Moniezia expansa* (Cestoda): the role of pyruvate kinase. *Int.J.Parasitol.* 1972; 2: 333-40.
- [179] Harmych, S, Arnette, R, Komuniecki, R Role of dihydrolipoyl dehydrogenase (E3) and a novel E3-binding protein in the NADH sensitivity of the pyruvate dehydrogenase complex from anaerobic mitochondria of the parasitic nematode, *Ascaris suum*. *Mol.Biochem.Parasitol.* 2002; 125: 135-46.
- [180] Huang, YJ, Walker, D, Chen, W, Klingbeil, M, Komuniecki, R Expression of pyruvate dehydrogenase isoforms during the aerobic/anaerobic transition in the development of the parasitic nematode *Ascaris suum*: altered stoichiometry of phosphorylation/inactivation. *Arch.Biochem.Biophys.* 1998; 352: 263-70.

- [181] Huang, YJ, Komuniecki, R Cloning and characterization of a putative testis-specific pyruvate dehydrogenase beta subunit from the parasitic nematode, *Ascaris suum*. Mol.Biochem.Parasitol. 1997; 90: 391-4.
- [182] Klingbeil, MM, Walker, DJ, Huang, YJ, Komuniecki, R Altered phosphorylation/inactivation of a novel pyruvate dehydrogenase in adult *Ascaris suum* muscle. Mol.Biochem.Parasitol. 1997; 90: 323-6.
- [183] Klingbeil, MM, Walker, DJ, Arnette, R, Sidawy, E, Hayton, K, Komuniecki, PR, Komuniecki, R Identification of a novel dihydrolipoyl dehydrogenase-binding protein in the pyruvate dehydrogenase complex of the anaerobic parasitic nematode, *Ascaris suum*. J.Biol.Chem. 1996; 271: 5451-7.
- [184] Komuniecki, R, Rhee, R, Bhat, D, Duran, E, Sidawy, E, Song, H The pyruvate dehydrogenase complex from the parasitic nematode *Ascaris suum*: novel subunit composition and domain structure of the dihydrolipoyl transacetylase component. Arch.Biochem.Biophys. 1992; 296: 115-21.
- [185] Komuniecki, R, Komuniecki, PA, Saz, HJ Purification and properties of the *Ascaris* pyruvate dehydrogenase complex. Biochim.Biophys.Acta 1979; 571: 1-11.
- [186] Reed, LJ, Damuni, Z, Merryfield, ML Regulation of mammalian pyruvate and branched-chain alpha-keto acid dehydrogenase complexes by phosphorylation-dephosphorylation. Curr.Top.Cell.Regul. 1985; 27: 41-9.
- [187] Korotchkina, LG, Patel, MS Mutagenesis studies of the phosphorylation sites of recombinant human pyruvate dehydrogenase. Site-specific regulation. J.Biol.Chem. 1995; 270: 14297-304.
- [188] Thissen, J, Komuniecki, R Phosphorylation and inactivation of the pyruvate dehydrogenase from the anaerobic parasitic nematode, *Ascaris suum*. Stoichiometry and amino acid sequence around the phosphorylation sites. J.Biol.Chem. 1988; 263: 19092-7.

- [189] Diaz, F, Komuniecki, RW Pyruvate dehydrogenase complexes from the equine nematode, *Parascaris equorum*, and the canine cestode, *Dipylidium caninum*, helminths exhibiting anaerobic mitochondrial metabolism. *Mol.Biochem.Parasitol.* 1994; 67: 289-99.
- [190] Thissen, J, Desai, S, McCartney, P, Komuniecki, R Improved purification of the pyruvate dehydrogenase complex from *Ascaris suum* body wall muscle and characterization of PDHa kinase activity. *Mol.Biochem.Parasitol.* 1986; 21: 129-38.
- [191] Komuniecki, R, Wack, M, Coulson, M Regulation of the *Ascaris suum* pyruvate dehydrogenase complex by phosphorylation and dephosphorylation. *Mol.Biochem.Parasitol.* 1983; 8: 165-76.
- [192] Rahman, MM, Rosu, S, Joseph-Strauss, D, Cohen-Fix, O Down-regulation of tricarboxylic acid (TCA) cycle genes blocks progression through the first mitotic division in *Caenorhabditis elegans* embryos. *Proc.Natl.Acad.Sci.U.S.A.* 2014; 111: 2602-7.
- [193] Zinsser, VL, Moore, CM, Hoey, EM, Trudgett, A, Timson, DJ Citrate synthase from the liver fluke *Fasciola hepatica*. *Parasitol.Res.* 2013; 112: 2413-7.
- [194] Diaz, F, Komuniecki, R Characterization of the  $\alpha$ -ketoglutarate dehydrogenase complex from *Fasciola hepatica*: potential implications for the role of calcium in the regulation of helminth mitochondrial metabolism. *Mol.Biochem.Parasitol.* 1996; 81: 243-6.
- [195] Pawelczyk, T, Angielski, S Cooperation of  $\text{Ca}^{2+}$  and pH in regulation of the activity of the 2-oxoglutarate dehydrogenase complex and its components from bovine kidney cortex. *Acta Biochim.Pol.* 1984; 31: 289-305.
- [196] Kulkarni, G, Sabnis, NA, Harris, BG Cloning, expression, and purification of fumarase from the parasitic nematode *Ascaris suum*. *Protein Expr.Purif.* 2004; 33: 209-13.
- [197] Zheng, N, Huang, B, Xu, J, Huang, S, Chen, J, Hu, X, Ji, C, Ying, K, Yu, X Cloning and expression of mitochondrial malate dehydrogenase of *Clonorchis sinensis*. *Parasitol.Res.* 2008; 102: 989-95.

- [198] Zheng, N, Huang, B, Xu, J, Huang, S, Chen, J, Hu, X, Ying, K, Yu, X Enzymatic and physico-chemical characteristics of recombinant cMDH and mMDH of *Clonorchis sinensis*. Parasitol.Res. 2006; 99: 174-80.
- [199] Banu, MJ, Nellaiappan, K, Dhandayuthapani, S Mitochondrial malate dehydrogenase and malic enzyme of a filarial worm *Setaria digitata*: some properties and effects of drugs and herbal extracts. Jpn.J.Med.Sci.Biol. 1992; 45: 137-50.
- [200] Das, B, Tandon, V, Saxena, JK, Joshi, S, Singh, AR Purification and characterization of phosphoenolpyruvate carboxykinase from *Raillietina echinobothrida*, a cestode parasite of the domestic fowl. Parasitology 2013; 140: 136-46.
- [201] Wilkes, J, Cornish, RA, Mettrick, DF Purification and properties of phosphoenolpyruvate carboxykinase from *Hymenolepis diminuta* (Cestoda). J.Parasitol. 1981; 67: 832-40.
- [202] Titheradge, MA, Picking, RA, Haynes, RC,Jr Physiological concentrations of 2-oxoglutarate regulate the activity of phosphoenolpyruvate carboxykinase in liver. Biochem.J. 1992; 285 ( Pt 3): 767-71.
- [203] Omura, S, Miyadera, H, Ui, H, Shiomi, K, Yamaguchi, Y, Masuma, R, Nagamitsu, T, Takano, D, Sunazuka, T, Harder, A, Kolbl, H, Namikoshi, M, Miyoshi, H, Sakamoto, K, Kita, K An anthelmintic compound, nafuredin, shows selective inhibition of complex I in helminth mitochondria. Proc.Natl.Acad.Sci.U.S.A. 2001; 98: 60-2.
- [204] Shiomi, K, Ui, H, Suzuki, H, Hatano, H, Nagamitsu, T, Takano, D, Miyadera, H, Yamashita, T, Kita, K, Miyoshi, H, Harder, A, Tomoda, H, Omura, S A  $\gamma$ -lactone form nafuredin, nafuredin- $\gamma$ , also inhibits helminth complex I. J.Antibiot.(Tokyo) 2005; 58: 50-5.
- [205] Matsumoto, J, Sakamoto, K, Shinjyo, N, Kido, Y, Yamamoto, N, Yagi, K, Miyoshi, H, Nonaka, N, Katakura, K, Kita, K, Oku, Y Anaerobic NADH-fumarate reductase system is predominant in the

respiratory chain of *Echinococcus multilocularis*, providing a novel target for the chemotherapy of alveolar echinococcosis. *Antimicrob. Agents Chemother.* 2008; 52: 164-70.

[206] Murai, M, Sekiguchi, K, Nishioka, T, Miyoshi, H Characterization of the inhibitor binding site in mitochondrial NADH-ubiquinone oxidoreductase by photoaffinity labeling using a quinazoline-type inhibitor. *Biochemistry* 2009; 48: 688-98.

[207] Roper, JR, Guther, ML, Milne, KG, Ferguson, MA Galactose metabolism is essential for the African sleeping sickness parasite *Trypanosoma brucei*. *Proc.Natl.Acad.Sci.U.S.A.* 2002; 99: 5884-9.

[208] Roper, JR, Ferguson, MA Cloning and characterisation of the UDP-glucose 4'-epimerase of *Trypanosoma cruzi*. *Mol.Biochem.Parasitol.* 2003; 132: 47-53.

[209] Roper, JR, Guther, ML, Macrae, JI, Prescott, AR, Hallyburton, I, Acosta-Serrano, A, Ferguson, MA The suppression of galactose metabolism in procyclic form *Trypanosoma brucei* causes cessation of cell growth and alters procyclin glycoprotein structure and copy number. *J.Biol.Chem.* 2005; 280: 19728-36.

[210] MacRae, JI, Obado, SO, Turnock, DC, Roper, JR, Kierans, M, Kelly, JM, Ferguson, MA The suppression of galactose metabolism in *Trypanosoma cruzi* epimastigotes causes changes in cell surface molecular architecture and cell morphology. *Mol.Biochem.Parasitol.* 2006; 147: 126-36.

[211] Urbaniak, MD, Turnock, DC, Ferguson, MA Galactose starvation in a bloodstream form *Trypanosoma brucei* UDP-glucose 4'-epimerase conditional null mutant. *Eukaryot.Cell.* 2006; 5: 1906-13.

[212] Alpey, MS, Burton, A, Urbaniak, MD, Boons, GJ, Ferguson, MA, Hunter, WN *Trypanosoma brucei* UDP-galactose-4'-epimerase in ternary complex with NAD<sup>+</sup> and the substrate analogue UDP-4-deoxy-4-fluoro- $\alpha$ -D-galactose. *Acta Crystallogr.Sect.F.Struct.Biol.Cryst.Commun.* 2006; 62: 829-34.

- [213] Durrant, JD, Urbaniak, MD, Ferguson, MA, McCammon, JA Computer-aided identification of *Trypanosoma brucei* uridine diphosphate galactose 4'-epimerase inhibitors: toward the development of novel therapies for African sleeping sickness. *J.Med.Chem.* 2010; 53: 5025-32.
- [214] Friedman, AJ, Durrant, JD, Pierce, LC, McCorvie, TJ, Timson, DJ, McCammon, JA The molecular dynamics of *Trypanosoma brucei* UDP-galactose 4'-epimerase: a drug target for African sleeping sickness. *Chem.Biol Drug Des.* 2012; 80: 173-81.
- [215] Setzer, WN, Ogungbe, IV *In-silico* investigation of antitrypanosomal phytochemicals from Nigerian medicinal plants. *PLoS Negl Trop.Dis.* 2012; 6: e1727.
- [216] Zinsser, VL, Lindert, S, Banford, S, Hoey, EM, Trudgett, A, Timson, DJ UDP-galactose 4'-epimerase from the liver fluke, *Fasciola hepatica*: biochemical characterization of the enzyme and identification of inhibitors. *Parasitology* 2014; In press: .
- [217] Timson, DJ The structural and molecular biology of type III galactosemia. *IUBMB Life* 2006; 58: 83-9.
- [218] Hanna, RE *Fasciola hepatica*: a light and electron microscope autoradiographic study of incorporation of monosaccharides into glycogen and glycoprotein. *Exp.Parasitol.* 1976; 39: 204-13.
- [219] Casaravilla, C, Malgor, R, Carmona, C Characterization of carbohydrates of adult *Echinococcus granulosus* by lectin-binding analysis. *J.Parasitol.* 2003; 89: 57-61.
- [220] Apinhasmit, W, Sobhon, P, Tarasub, C, Mothong, W, Saitongdee, P, Sretarugsa, P, Wanichanon, C, Upatham, ES *Opisthorchis viverrini*: ultrastructure and cytochemistry of the glycocalyx of the tegument. *J.Helminthol.* 2000; 74: 23-9.
- [221] Schmidt, J Glycans with N-acetyllactosamine type 2-like residues covering adult *Schistosoma mansoni*, and glycomimesis as a putative mechanism of immune evasion. *Parasitology* 1995; 111 ( Pt 3): 325-36.

- [222] Ikeda, T, Oikawa, Y *Paragonimus ohirai*: immunobiochemical characterization on the tegumental glycocalyx of excysted juvenile recognized by a monoclonal antibody. *Exp.Parasitol.* 1991; 72: 252-61.
- [223] Caulfield, JP, Cianci, CM, McDiarmid, SS, Suyemitsu, T, Schmid, K Ultrastructure, carbohydrate, and amino acid analysis of two preparations of the cercarial glycocalyx of *Schistosoma mansoni*. *J.Parasitol.* 1987; 73: 514-22.
- [224] Schmidt, J, Peters, W Localization of glycoconjugates at the tegument of the tapeworms *Hymenolepis nana* and *H. microstoma* with gold labelled lectins. *Parasitol.Res.* 1987; 73: 80-6.
- [225] Trimble, JJ,3rd, Lumsden, RD Cytochemical characterization of tegument membrane-associated carbohydrates in *Taenia crassiceps* larvae. *J.Parasitol.* 1975; 61: 665-76.
- [226] Oaks, JA, Lumsden, RD Cytological studies on the absorptive surfaces of cestodes. V. Incorporation of carbohydrate-containing macromolecules into tegument membranes. *J.Parasitol.* 1971; 57: 1256-68.
- [227] Liu, P, Shi, Y, Yang, Y, Cao, Y, Shi, Y, Li, H, Liu, J, Lin, J, Jin, Y *Schistosoma japonicum* UDP-glucose 4-epimerase protein is located on the tegument and induces moderate protection against challenge infection. *PLoS One* 2012; 7: e42050.
- [228] Huang, SC, Freitas, TC, Amiel, E, Everts, B, Pearce, EL, Lok, JB, Pearce, EJ Fatty acid oxidation is essential for egg production by the parasitic flatworm *Schistosoma mansoni*. *PLoS Pathog.* 2012; 8: e1002996.
- [229] Wolf, HP Possible new therapeutic approach in diabetes mellitus by inhibition of carnitine palmitoyltransferase 1 (CPT1). *Horm.Metab.Res.Suppl.* 1992; 26: 62-7.

- [230] Hai, Y, Edwards, JE, Van Zandt, MC, Hoffmann, KF, Christianson, DW Crystal structure of *Schistosoma mansoni* arginase, a potential drug target for the treatment of schistosomiasis. *Biochemistry* 2014; 53: 4671-84.
- [231] Senft, AW Studies in arginine metabolism by schistosomes. I. Arginine uptake and lysis by *Schistosoma mansoni*. *Comp.Biochem.Physiol.* 1966; 18: 209-16.
- [232] James, SL, Glaven, J Macrophage cytotoxicity against schistosomula of *Schistosoma mansoni* involves arginine-dependent production of reactive nitrogen intermediates. *J.Immunol.* 1989; 143: 4208-12.
- [233] MacMicking, J, Xie, QW, Nathan, C Nitric oxide and macrophage function. *Annu.Rev.Immunol.* 1997; 15: 323-50.
- [234] Korsrud, GO, Baldwin, RL Estimations of rates of synthesis and degradation of several rat mammary gland enzymes from changes in enzyme activities. *Can.J.Biochem.* 1972; 50: 386-91.
- [235] Krebs, HA, Johnson, WA The rôle of citric acid in intermediate metabolism in animal tissues. *Enzymologia* 1937; 4: 148-56.



## Figure and scheme legends

Figure 1: **Schematic diagram of the metabolism of helminths under anaerobic conditions.** CoA, coenzyme A; AcCoA, acetyl coenzyme A; MeMalCoA, methylmalonyl coenzyme A; PropCoA, propionyl coenzyme A; RQ, rholoquinone; RQH, reduced rholoquinone. The grey shaded box represents mitochondrial membrane complex I, the dashed line transport of malate across the mitochondrial membranes and the large, open arrow the translocation of protons between the matrix and the intermembrane space of the mitochondria. The outward translocation by complex I generates a proton motive force which can be utilised by ATP synthase (grey circle; EC 3.6.3.14) to generate ATP.

Scheme 1: Structures of drugs known to target helminth metabolic enzymes

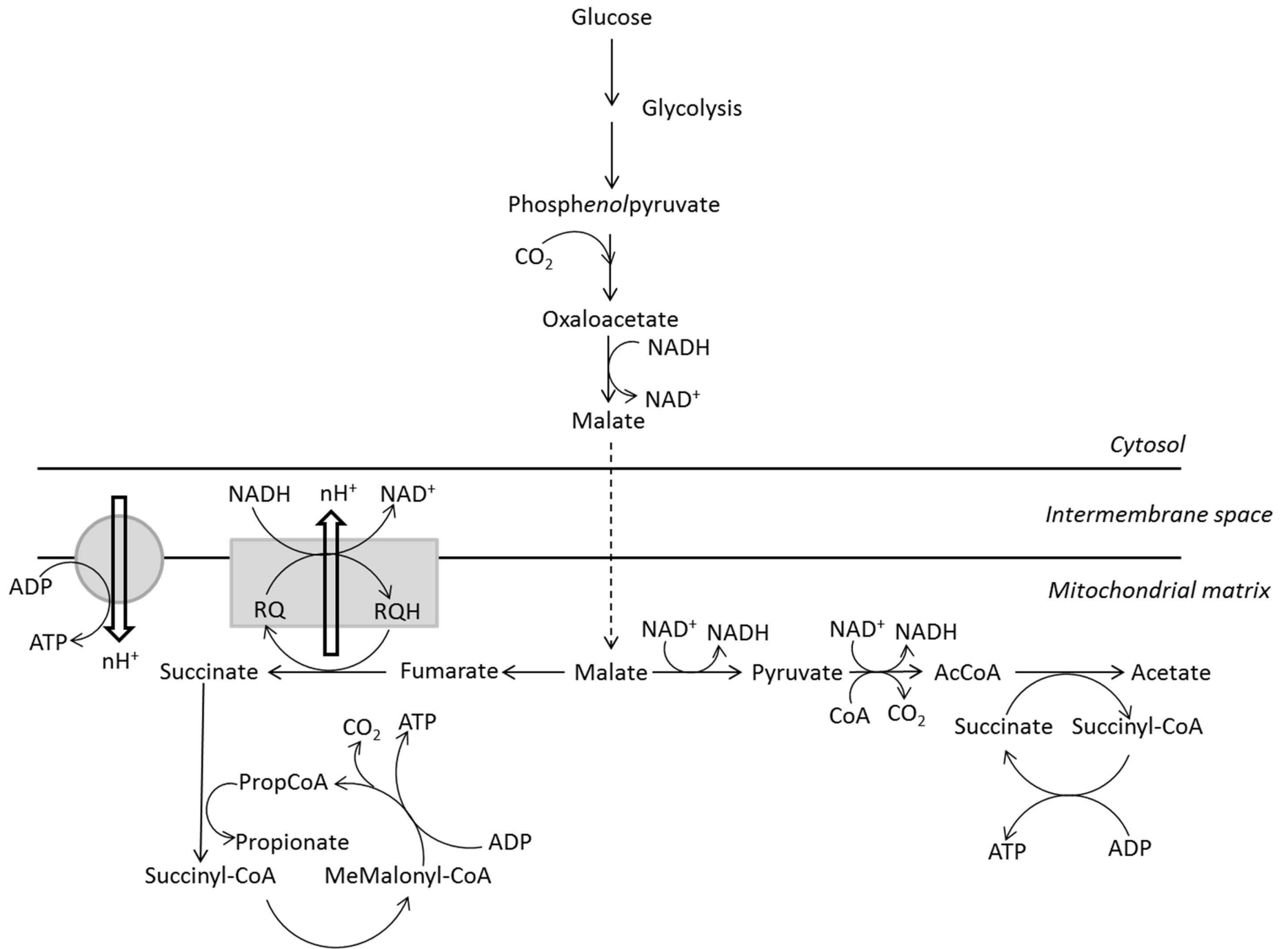
Scheme 2: Structure of rholoquinone

Scheme 3: Structures of inhibitors of helminth glycolytic enzymes

Scheme 4: Structures of experimentally and computationally identified inhibitors of nematode phosphoglycerate mutase

Scheme 5: Structures of inhibitors of helminth TCA and oxidative phosphorylation enzymes

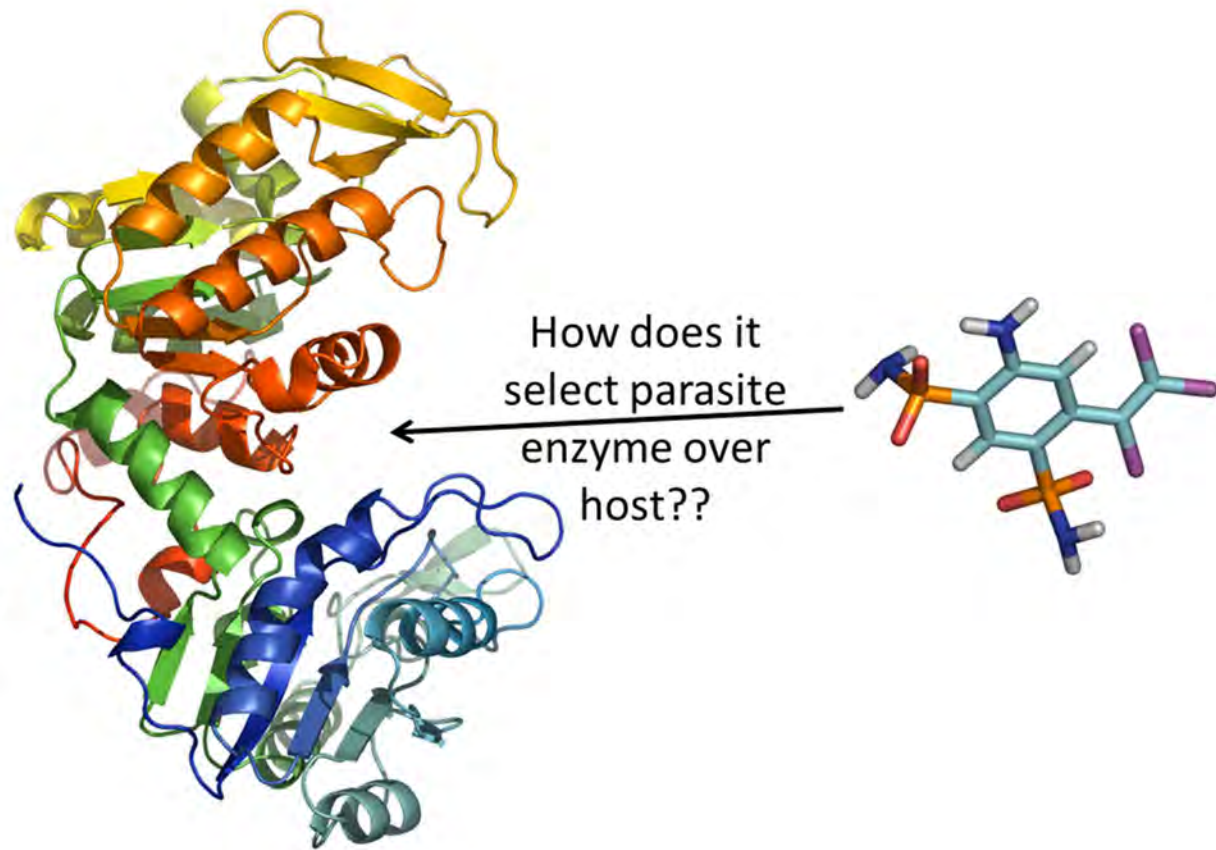
Scheme 6: Structures of inhibitors of helminth  $\beta$ -oxidation, Leloir pathway and amino acid metabolism pathways

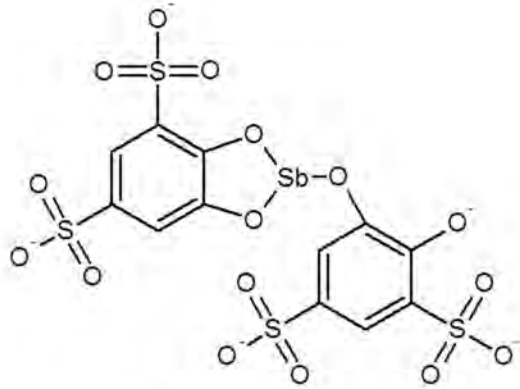


**Metabolic enzymes of helminth parasites: potential as drug targets**

David J. Timson

**ABSTRACT:** Clorsulon is a widely used anthelmintic which targets two glycolytic enzymes. The challenge is to find more molecules which target metabolism.

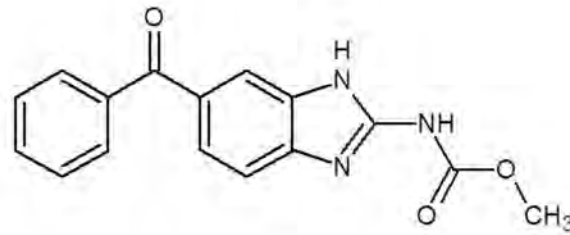




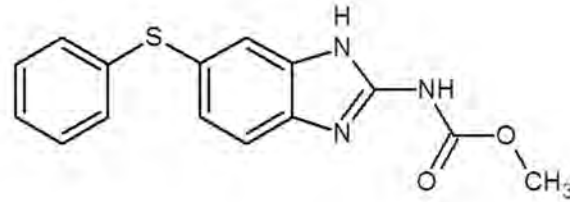
**Stibophen**  
(A trivalent antimonial)



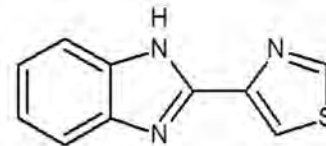
**Clorsulon**



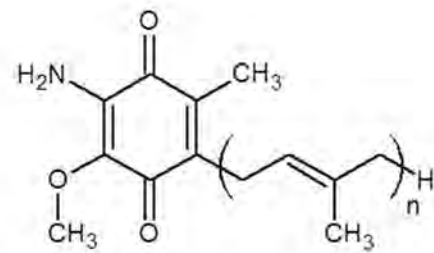
**Mebendazole**



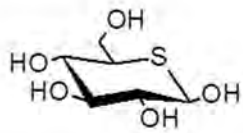
**Fenbendazole**



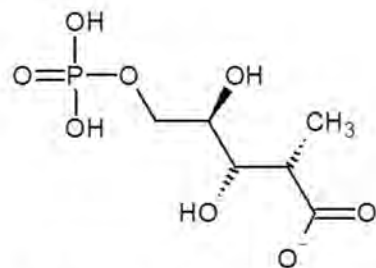
**Thiabendazole**



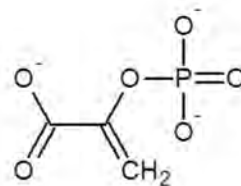
Rhodoquinone  
 $E^{\circ'}=67$  mV



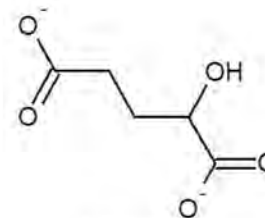
5-thioglucose



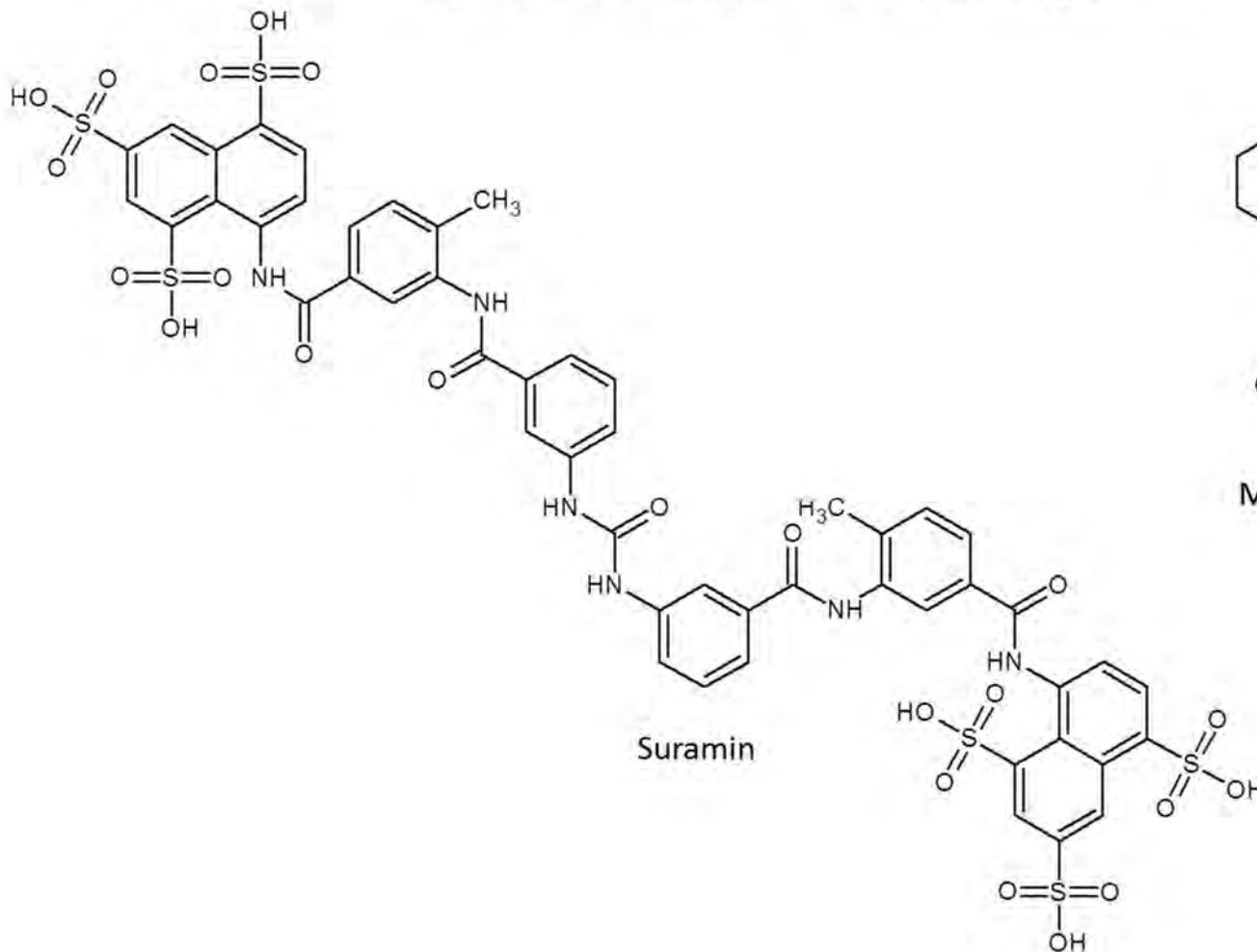
5-phospho-D-arabinoate



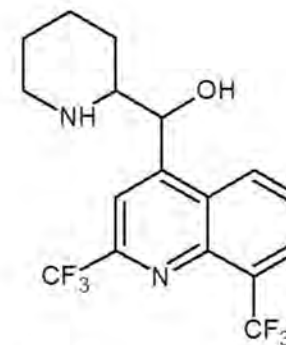
Phosphoenolpyruvate



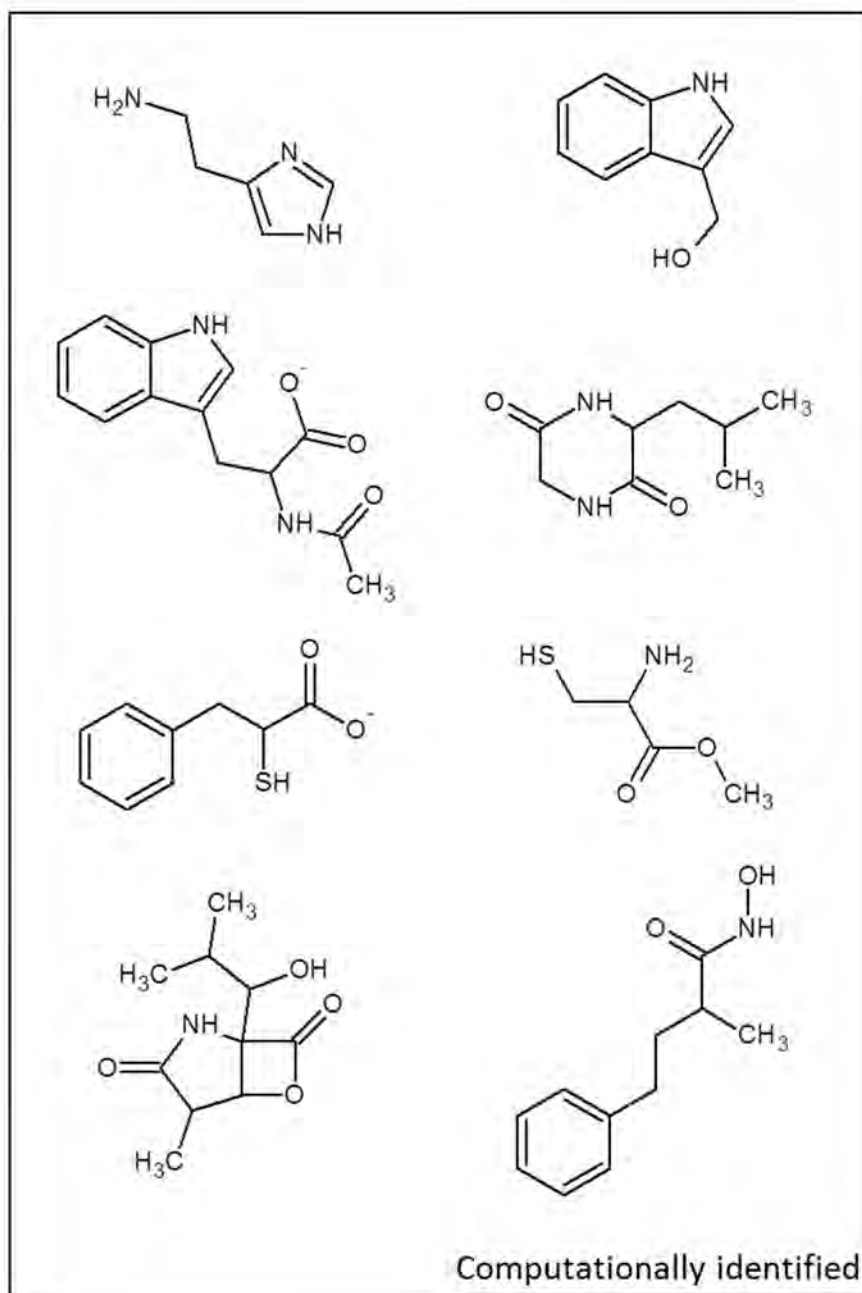
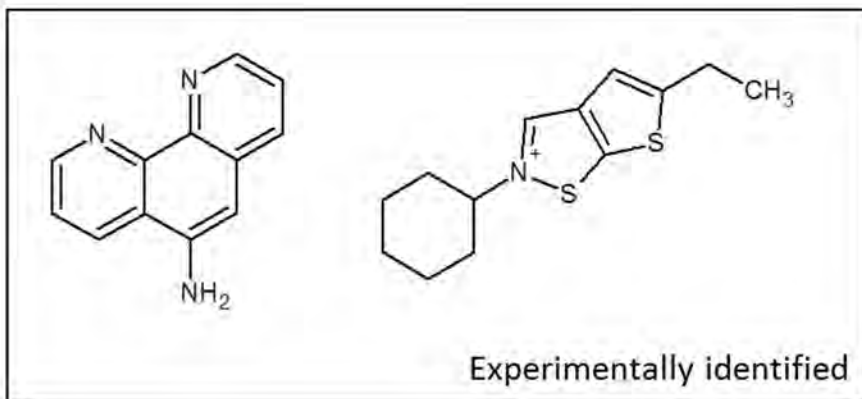
Malate

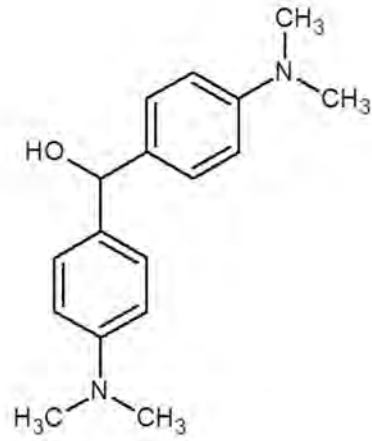


Suramin

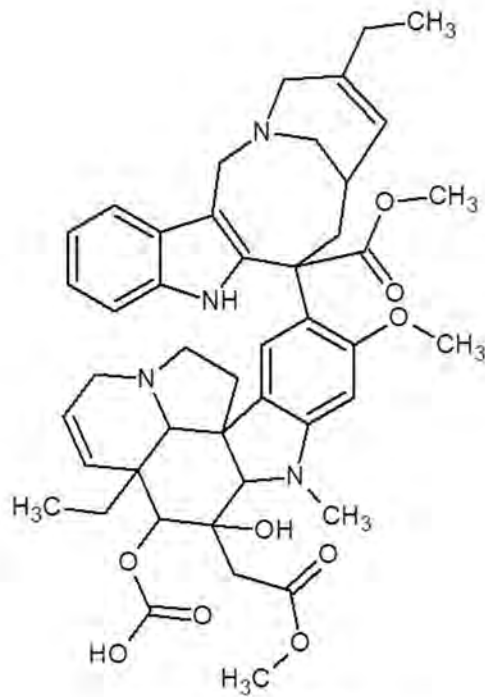


Mefloquine (Larium)



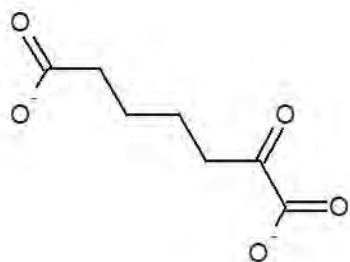


4,4'-*bis*dimethylaminodiphenylcarbinol  
(Michler's hydrol)

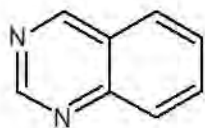


Filarin (vinorelbine)

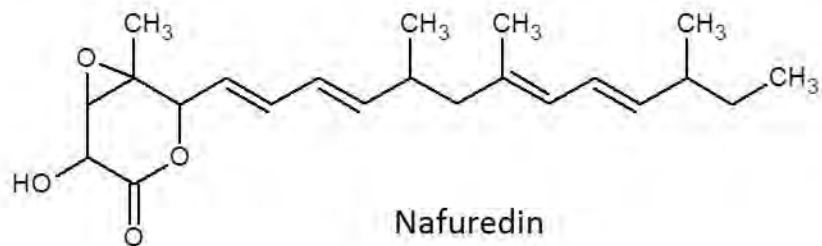




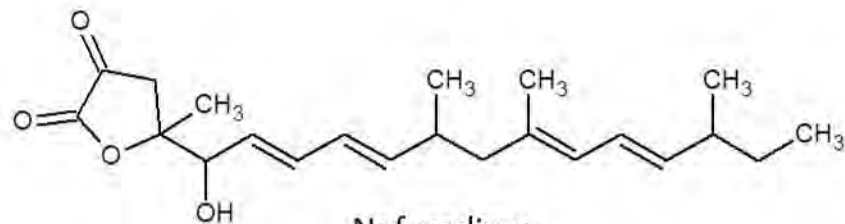
$\alpha$ -Ketoglutarate



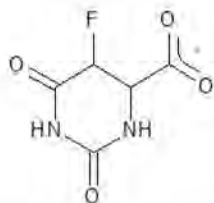
Quinazoline



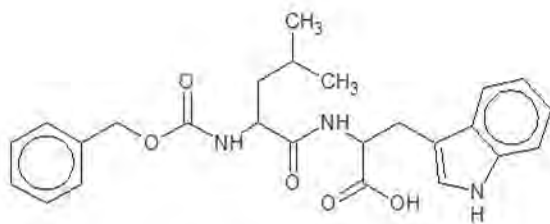
Nafuredin



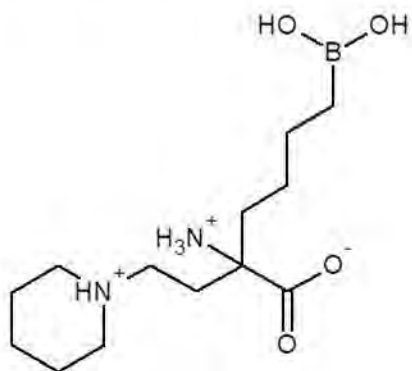
Nafuredin- $\gamma$



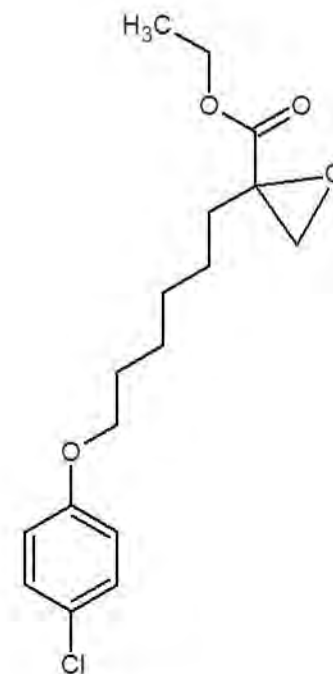
5-Fluoroorotate



N-[(benzyloxy)carbonyl]leucyltryptophan



(R)-2-amino-6-borono-2-[2-(piperidin-1-yl)ethyl]hexanoic acid



Etomoxir